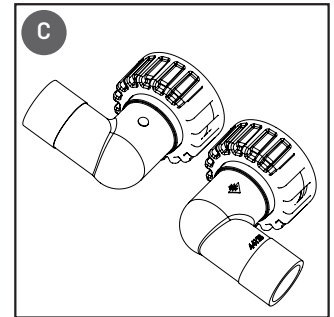
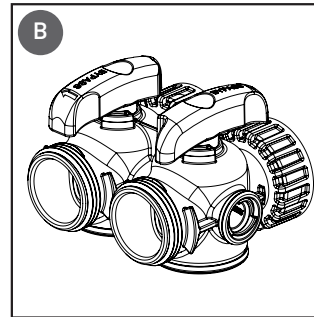
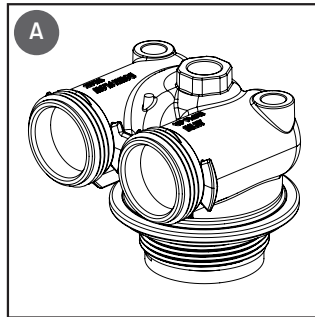




FLECK® 125 IN-AND-OUT VALVE Installation Instructions

COMPONENTS

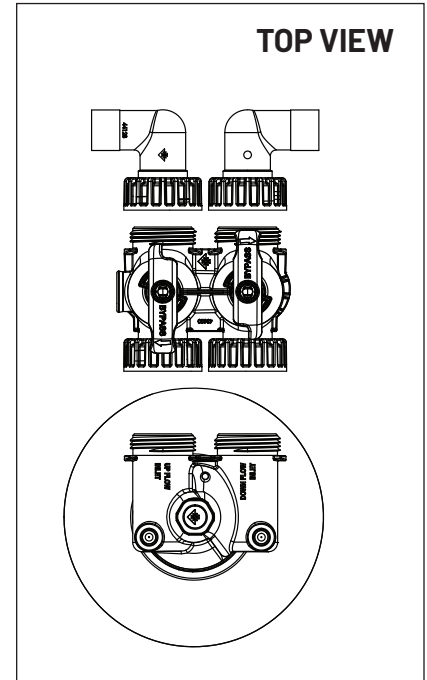
- A) Pentair® Fleck 125 In-And-Out Valve
- B) Bypass
- C) Connector



PRODUCT SPECIFICATIONS AND OPERATION

Specification Description	
Minimum Pressure	20 PSI
Maximum Pressure	125 PSI
Minimum Water Temperature	34°F (1°C)
Maximum Water Temperature	110°F (43°C)
Minimum Ambient Temperature	34°F (1°C)
Maximum Ambient Temperature	125°F (52°C)

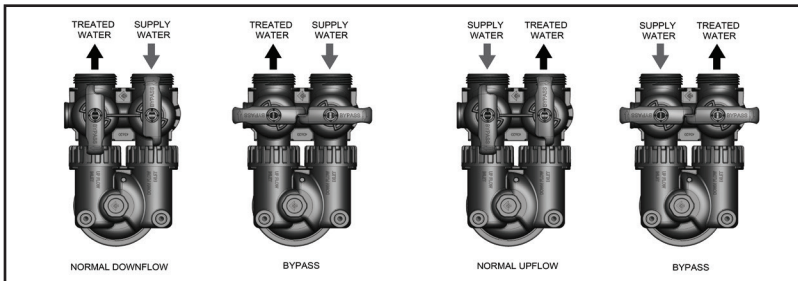
Flow Rate	62134-01		62134-02	
	Downflow	Upflow	Downflow	Upflow
Continuous (15 psid drop)	54.9 GPM [12.5 m ³ /hr]	47.4 GPM [10.8 m ³ /hr]	62.3 GPM [14.2 m ³ /hr]	62.6 GPM [14.2 m ³ /hr]
Peak (25 psid drop)	70.9 GPM [16.1 m ³ /hr]	61.2 GPM [13.9 m ³ /hr]	80.4 GPM [18.3 m ³ /hr]	80.7 GPM [18.3 m ³ /hr]
Cv (Flow at 1 psi drop)	14.2	12.2	16.1	16.2



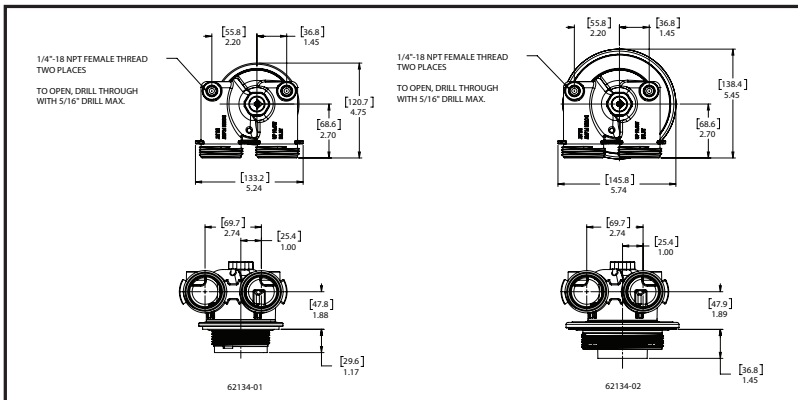
BYPASS OPERATION

1. Valve is in service when blue handles are turned parallel to inlet and out.
2. Valve is in bypass when both handles are turned clockwise and are perpendicular to inlet and outlet ports.
3. To depressurize a downflow system:
 - a. Turn blue handle of supply side clockwise to be perpendicular to port.
 - b. Open a downstream water tap /faucet to relieve pressure.
 - c. Turn blue handle on treated water side clockwise so it is perpendicular to the port.
 - d. Remove the Fleck 125 In-and-Out Valve by slowly unthreading the coupling nuts.
4. To depressurize an upflow system:
 - a. Turn off main water supply.
 - b. Open a downstream water tap to relieve pressure.
 - c. Turn both blue handles clockwise so they are perpendicular to the ports.
 - d. Turn main water supply back on.
 - e. Remove the Fleck 125 In-and-Out Valve by slowly unthreading the coupling nuts.

As an option, a relief valve can be installed in either of the two 1/4"-18 NPT ports and used to relieve pressure in the Fleck 125 In-and-Out Valve after the bypass valve has been put in the bypass position. Follow the instructions below, items 7 and 8, for preparing these ports for use.



DIMENSIONAL DRAWINGS



IMPORTANT! PLEASE READ

1. The information, specifications and illustrations in the manual are based on the latest information available at the time of release. The manufacturer reserves the right to make changes at any time without notice.
2. This product should be installed by a plumbing professional.
3. This unit is designed to be installed on potable water systems only.
4. Check all applicable plumbing and building codes for installation compliance. It is established that when daytime water pressure exceeds 80 psi (5.5 bar), the maximum pressure rating of 125 psi (8.6 bar) can be exceeded. A pressure regulator must be installed on this system or warranty is voided.
5. Do not place the unit in direct sunlight. Black units will absorb radiant heat, increasing internal temperatures.
6. Do not strike the valve or any of the components.
7. Do not use petroleum-based lubricants such as Vaseline, oils, or hydrocarbon-based lubricants on any o-rings. Use only 100% silicone lubricants.
8. When using test ports:
 - To open ports, drill through with clean drill no larger than 5/16" prior to installation of Fleck 125 In-and-Out Valve on tank. Use a clean drill bit free of oil and do not use any drilling lubricant.
 - Be sure to clean out any chips or debris prior to installation.
 - Do not use more than 2 wraps of Teflon tape when installing a component to these ports. Do not use pipe dope.
 - When installing component into the 1/4"-18 NPT ports, do not exceed 25 Lb-in torque.



13845 Bishops Dr. | Suite 200 | Brookfield, WI 53005 | United States

P: 262.238.4400 | Customer Service: 800.279.9404 | tech-support@pentair.com | pentair.com

All indicated Pentair trademarks and logos are property of Pentair. Third party registered and unregistered trademarks and logos are the property of their respective owners.

© 2022 Pentair. All rights reserved.

4006337 MY22