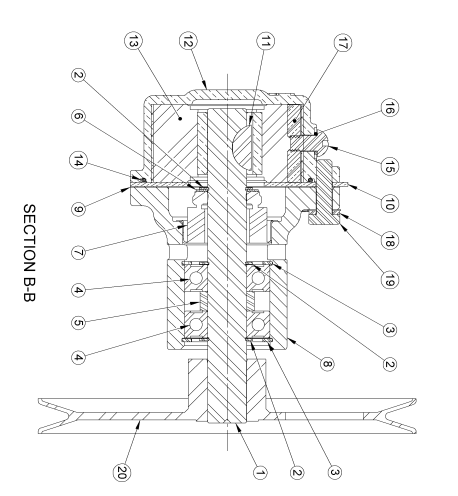
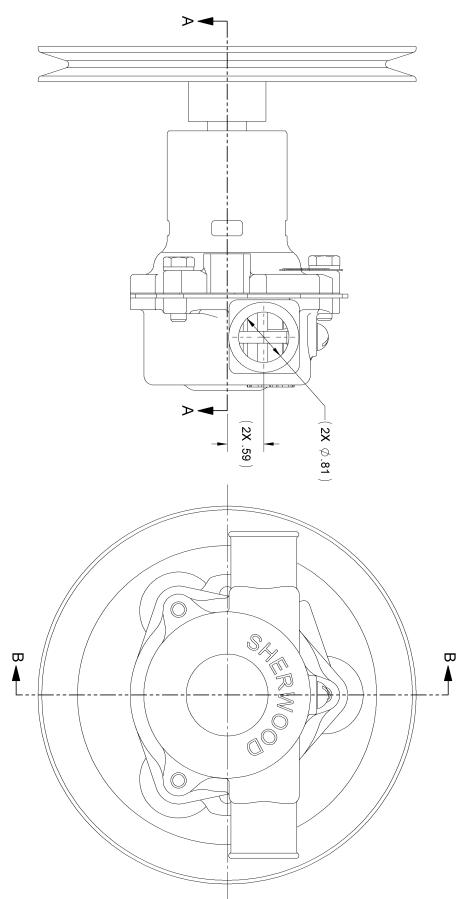
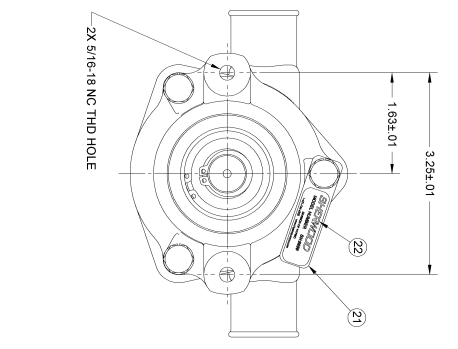
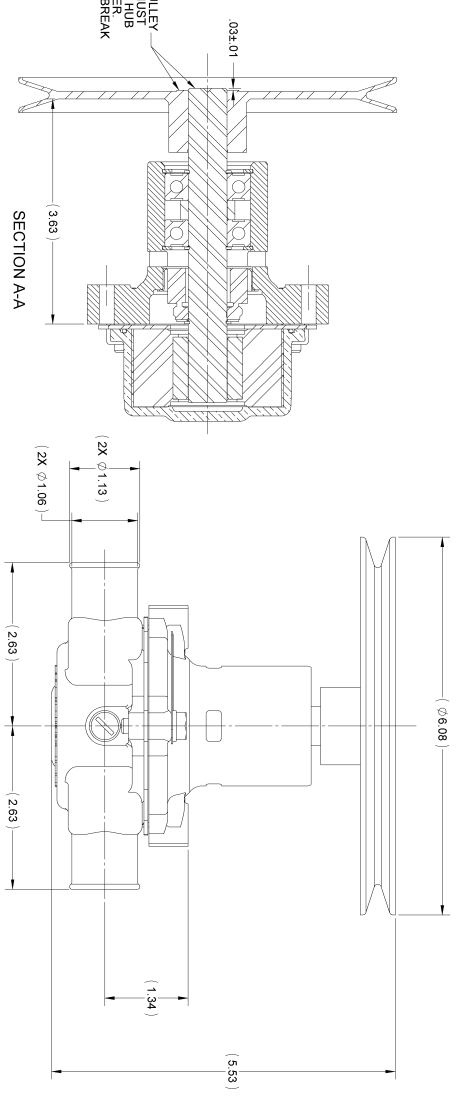


ITEM NO.	PART NUMBER	DESCRIPTION	QTY.
1	03363	SHAFT	1
2	04259	EXT. RETAINING RING	3
3	04259	INT. RETAINING RING	2
4	12211	BALL BEARING	2
5	05133	ELAS. SPACER	1
6	05133	ELAS. SPACER	1
7	12314	TYPE 6A SEAL/SEAT ASSY	1
8	12328	BODY - MACHINED	1
9	12855	GASKET	1
10	12856	WASHER PULLEY	1
11	04259	EXT. RETAINING RING	1
12	12303	HOUSING	1
13	09959	RUBBER IMPELLER	1
14	12231	OR-RING	1
15	12231	OR-RING	1
16	15986	CAM WASHER	1
17	15983	CAM	1
18	12710	LOCKWASHER	3
19	12857	PULLEY HUB	1
20	13265	PULLEY BELT TAG	1
21	13265	PULLEY BELT TAG	1
22	23083	LABEL	1

ASSEMBLY NOTES:

1. APPLY BEAD OF PERMATEX AROUND THE MATED HOLE IN CAM, ITEM 17.
2. USE WATER ONLY WHEN INSTALLING TYPE 6A SEAL/SEAT ASSY, ITEM 7.
3. USE COOLANT TO AID IN INSTALLATION OF RUBBER IMPELLER, ITEM 13.
4. TORQUE 1/4-20 HIGCS TO 5 - 8 FT.LBS.
5. PRESSURE TEST PUMP AT 20 - 30 PSI.
6. PRINT ON LABEL, ITEM 22

TO PROVIDE MAXIMUM SHAFT TO PULLEY BREAKAWAY TORQUE THE SHAFT MUST BE HELD SQUARE WITH THE PULLEY HUB WHEN THEY ARE PRESSED TOGETHER. SHERMING OF METAL WILL REDUCE BREAK AWAY TORQUE.



SHERWOOD
A Division of
20770th Avenue NW, Suite 1000, Edmonds, WA 98149
1-800-421-7272

SHERWOOD
DESIGNS BASED ON AIAE 714.004.004 (NO NOT SCALE PRINT)
1:1
SCALE: 1:1
SHEET NUMBER: 1 OF 1
DATE: 11/27/1980
REVISIONS: 1
DRAWN BY: RBN
CHECKED BY: RBN
DATE: 11/27/1980
APPROVED BY: RBN
DATE: 11/27/1980
PART NUMBER: G21
REV: P