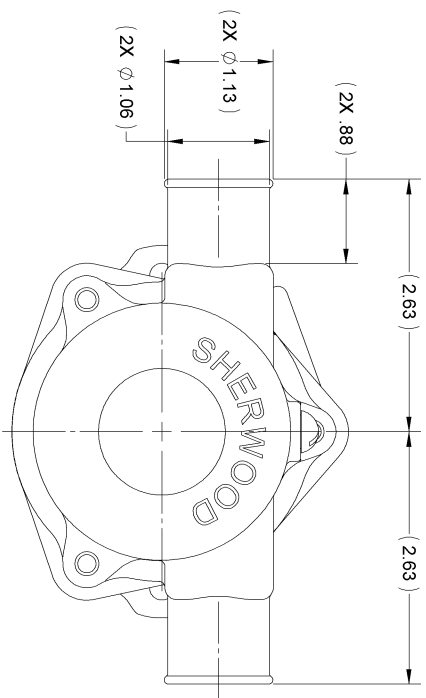
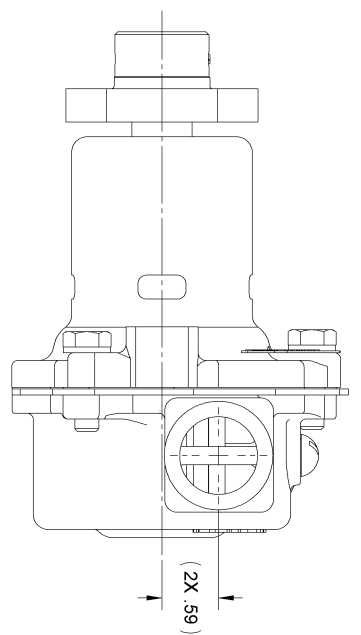
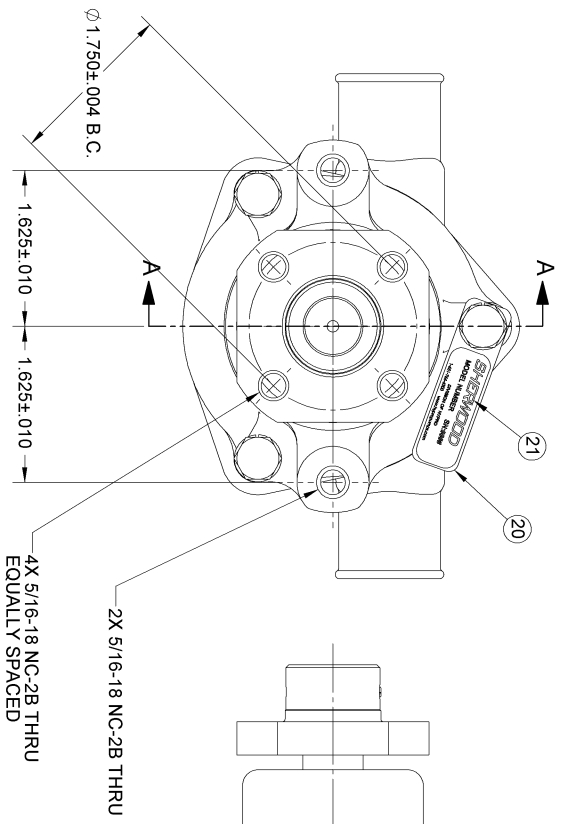
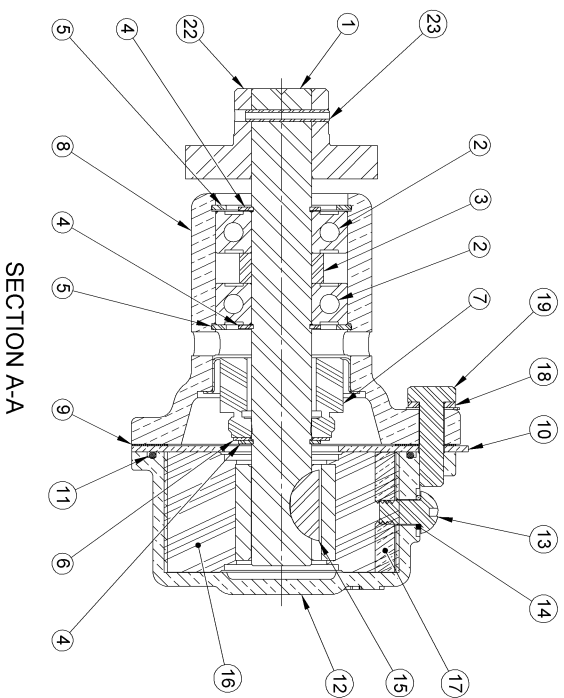
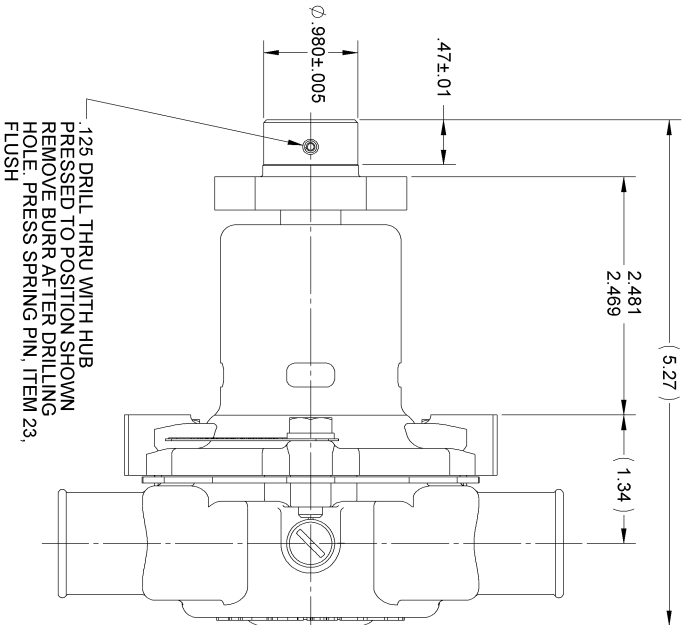


ITEM NO.	PART NUMBER	DESCRIPTION	QTY.
1	12612	SHAFT	1
2	12211	BALL BEARING	2
3	05133	SPACER	1
4	04258	EXT. RETAINING RING	3
5	04259	INT. RETAINING RING	2
6	04264	FLAT WASHER	1
7	12314	TYPE 6A SEAL/SEAT ASSY	1
8	19784	BODY - BRASS	1
9	12855	GASKET	1
10	12856	WEAR PLATE	1
11	12231	O-RING	1
12	12303	HOUSING	1
13	19995	SCREW 1/4-20 ROUND HD	1
14	19996	CAM WASHER	1
15	04432	WOODRUFF KEY	1
16	09959	RUBBER IMPELLER	1
17	15883	CAM	1
18	12710	LOCKWASHER	3
19	12857	1/4-20 HHCS	3
20	13285	TAG	1
21	23083	LABEL	1
22	12615	HUB - PULLEY	1
23	12791	SPRING PIN - SLOTTED	1

ASSEMBLY NOTES:

1. APPLY BEAD OF PERMATEX AROUND THREADED HOLE IN CAM, ITEM 17.
2. USE WATER ONLY WHEN INSTALLING TYPE 6A SEAL/SEAT ASSY, ITEM 7.
3. USE COOLANT TO AID IN INSTALLATION OF RUBBER IMPELLER, ITEM 16.
4. TORQUE 1/4-20 HHCS TO 5 - 8 FT/LBS, ITEM 19
5. PRESSURE TEST PUMP AT 20 - 30 PSI
6. PRINT ON LABEL, ITEM 21



REV.	DESCRIPTION	DATE	BY	CHKD	APP'D
C	REMOVE 12584 SEAT ASSY & 10151C CAM/SCREW ASSY	11/9/2007	PAB		
B	ADD 19995 CAM/SCREW & 1996 CAM/WASHER	6/30/2005	FE		
A	CHG REC 12211 WAS 23448	9/15/2002	DVJ		
REV.	CON	REVISION DESCRIPTION	CHNO	DATE	

REV.	DESCRIPTION	DATE	BY	CHKD	APP'D
C	REMOVE 12584 SEAT ASSY & 10151C CAM/SCREW ASSY	11/9/2007	PAB		
B	ADD 19995 CAM/SCREW & 1996 CAM/WASHER	6/30/2005	FE		
A	CHG REC 12211 WAS 23448	9/15/2002	DVJ		
REV.	CON	REVISION DESCRIPTION	CHNO	DATE	

SHERWOOD
A Div. of *Hippo Corporation* A PERRIN COMPANY
375 Fifth Avenue NW, New Brighton, MN 55112 (651) 764-6300

REPLACES PART NO. _____ REV. _____

DWG BY: _____ KB DATE: 5/11/1992
 CHECKED BY: _____ T.L.G. DATE: 5/19/1992
 APPROVED BY: _____ T.L.G. DATE: 5/19/1992

THIS DRAWING IS THE PROPERTY OF HIPPO AND WITHOUT WRITTEN AUTHORIZATION, IT IS NOT TO BE REPRODUCED OR TRANSMITTED IN ANY FORM OR BY ANY MEANS, ELECTRONIC OR MECHANICAL, INCLUDING PHOTOCOPYING, RECORDING, OR BY ANY INFORMATION STORAGE AND RETRIEVAL SYSTEM.

PART DESCRIPTION: RUBBER IMPELLER PUMP ASSY
 SCALE: 1-1
 SHEET NUMBER: 1 OF 1
 PART NUMBER: G30-2B
 REV: C