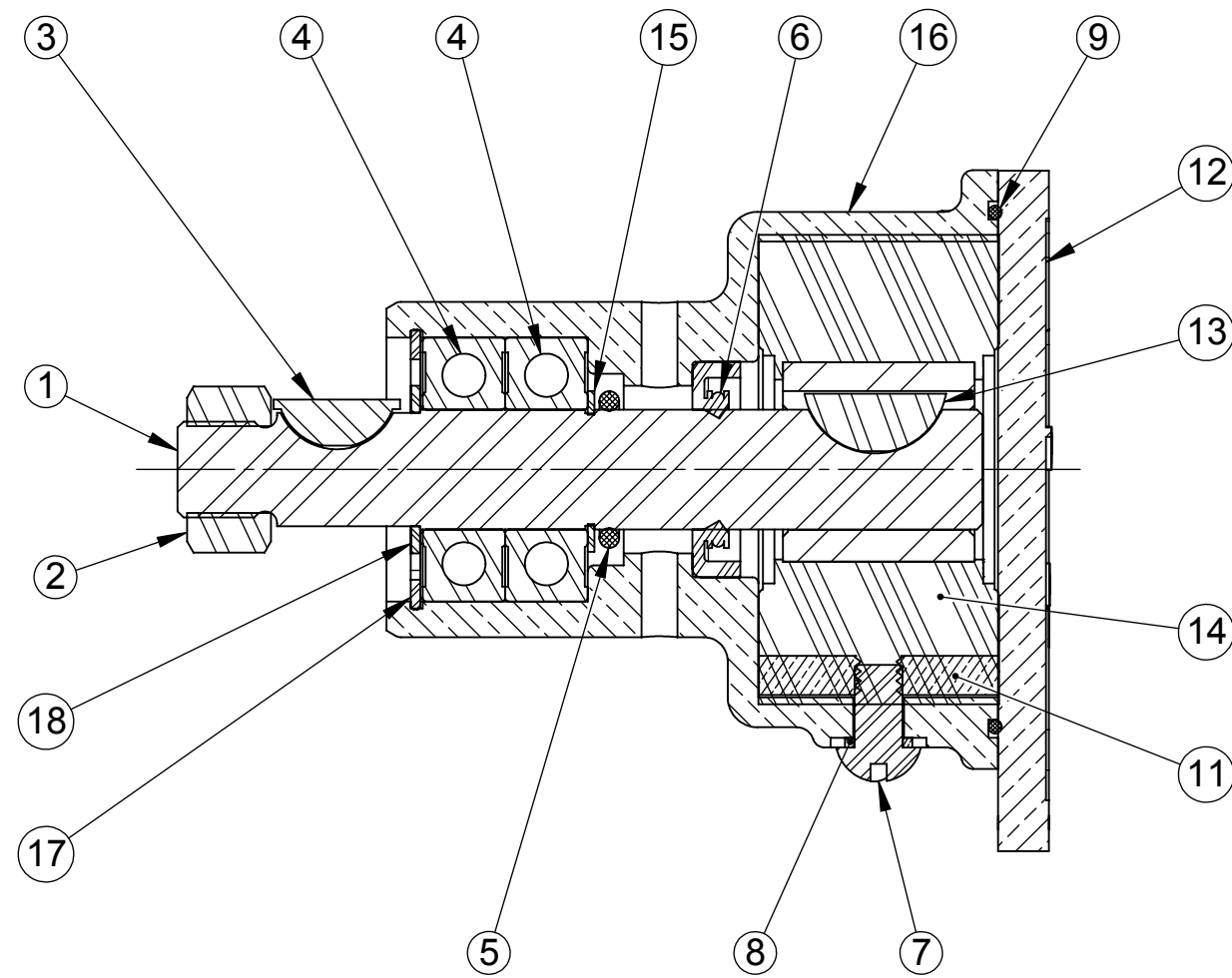


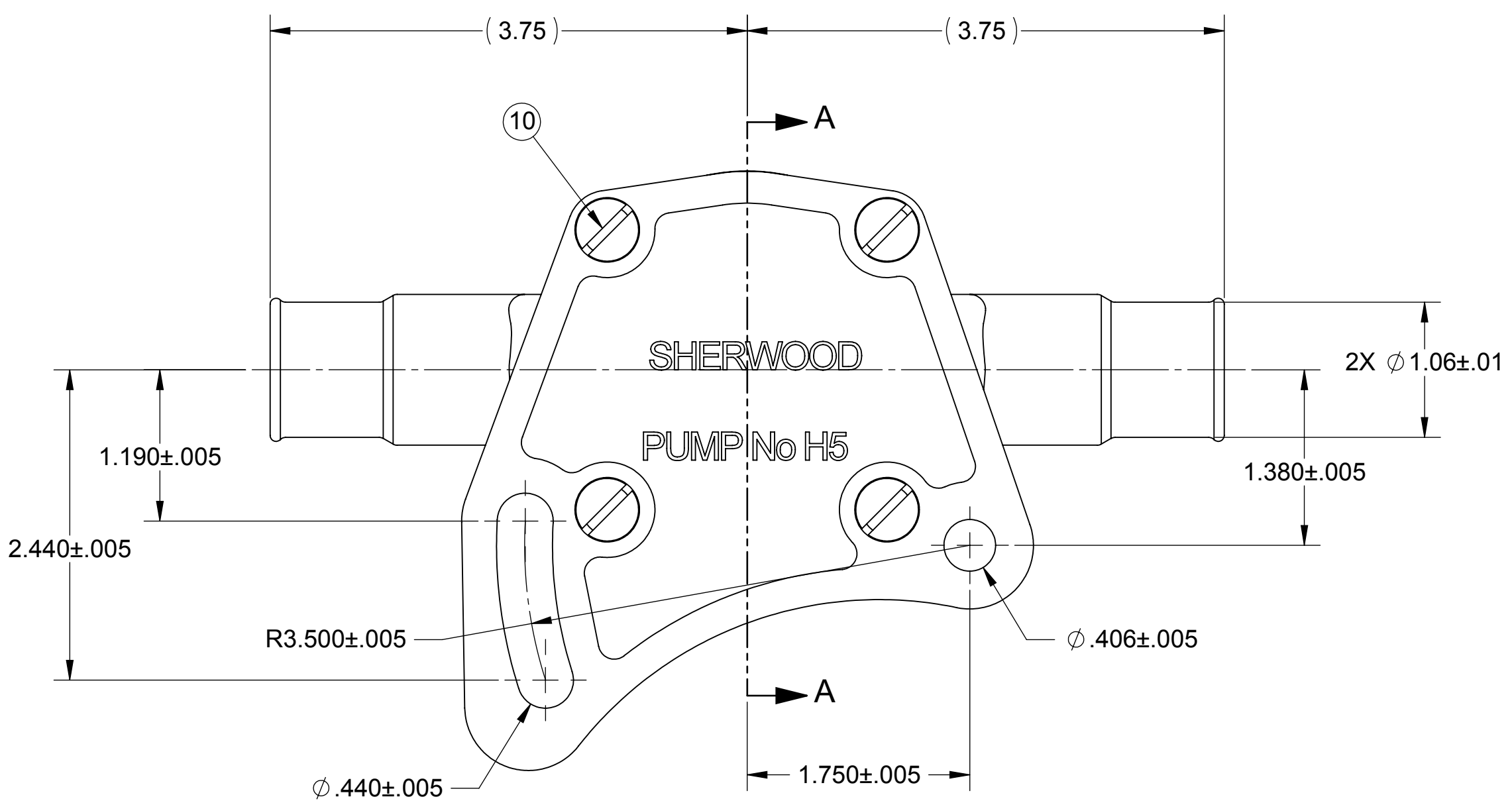
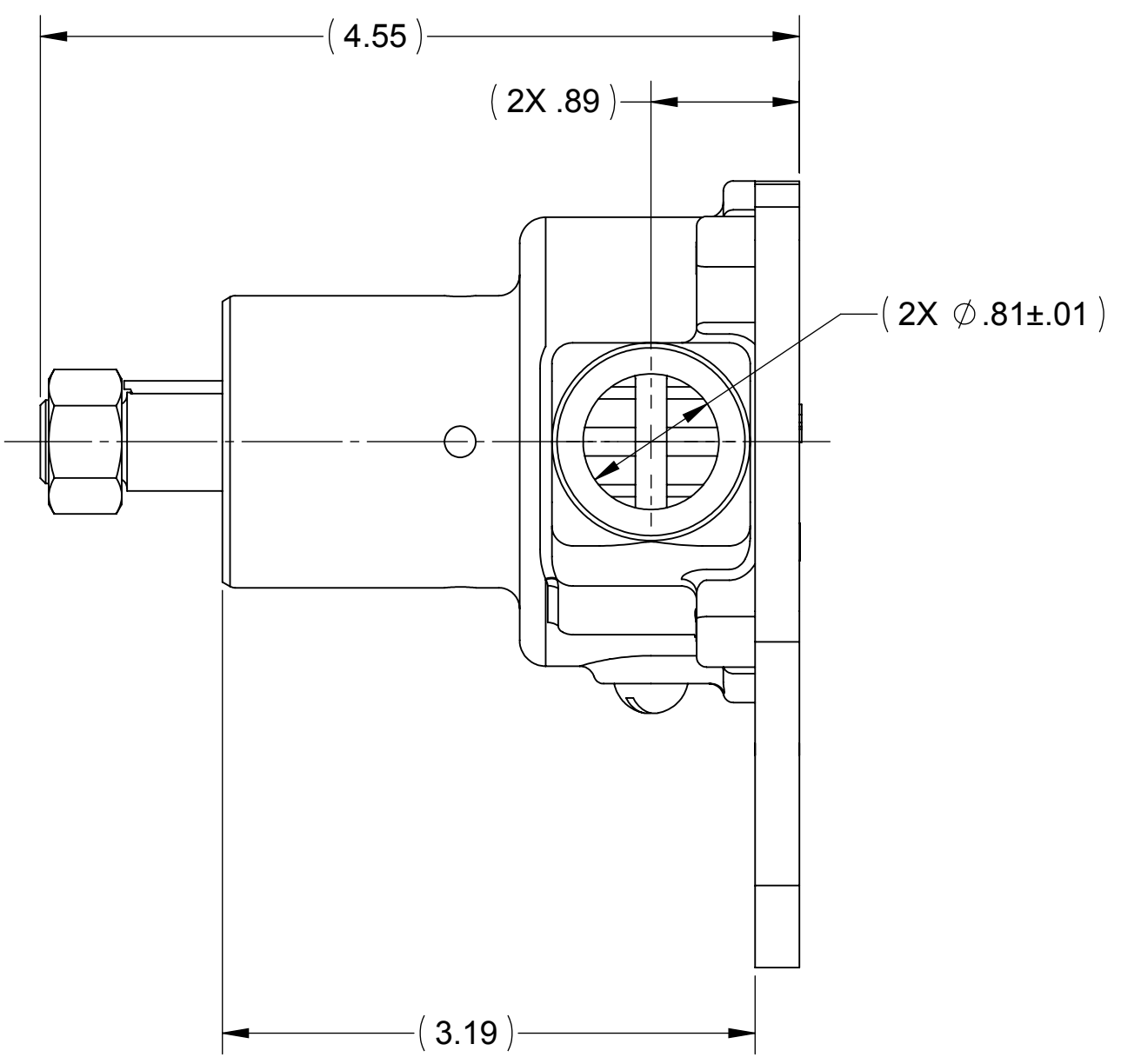
ITEM NO.	PART NUMBER	DESCRIPTION	QTY.
1	13272	SHAFT	1
2	13270	HEX NUT - 1/2-20 UNF	1
3	13271	KEY - #405	1
4	04257	BALL BEARING	2
5	06602	O-RING 2-114	1
6	10514C	SEAL, SINGLE LIP	1
7	19995	SCREW 1/4-20 ROUND HD	1
8	19996	CAM WASHER	1
9	12231	O-RING	1
10	11797	1/4-20 FLAT HEAD MACHINE SCR	4
11	15883	CAM	1
12	11795	COVER	1
13	04432	NON-ROCKING WOODRUFF KEY	1
14	09959	RUBBER IMPELLER	1
15	12582	RETAIN RING - EXT	1
16	11794	BODY - RUBBER IMPELLER	1
17	04259	INT. RETAINING RING -137	1
18	13273	WASHER - MACHINED	1



SECTION A-A

NOTES:

- ①. NOTE REMOVED. SEE ECN 7151
- 2. LIP SEAL TO BE INSTALLED DRY, ITEM 6.
- 3. USE COOLANT TO AID IN INSTALLATION OF RUBBER IMPELLER, ITEM 14.
- 4. PRESSURE TEST PUMP TO 20 - 30 PSI.
- 5. PULLEY TO BE FURNISHED AND ASSEMBLED TO PUMP BY CUSTOMER. CUSTOMER TO TORQUE HEX NUT, ITEM 2, TO 30 FT/LBS MAX. OVER-TORQUEING CAN DAMAGE RETAINING RING BEHIND BALL BEARING.



<p>SHERWOOD A Div. of Hypro Corporation A PENTAIR COMPANY 375 Fifth Avenue NW, New Brighton, MN 55112, (651) 766-6300</p>		REPLACES PART NO.	REV.
		DWG BY: RBM DATE: 6/21/1978	CHECKED BY: RBM DATE: 6/21/1978
DRAWING BASED ON ASME Y14.5M-1994	DO NOT SCALE PRINT	SIZE C	APPROVED BY: RBM DATE: 6/21/1978
THIRD ANGLE PROJECTION	SCALE 1:1	SHEET NUMBER 1 OF 1	THIS DRAWING IS THE PROPERTY OF HYPRO, AND WITHOUT WRITTEN AUTHORIZATION, MUST NOT BE COPIED OR COMMUNICATED
PART DESCRIPTION		PART NUMBER	REV.
RUBBER IMPELLER PUMP ASSY		H5	S

REV.	ECN	REVISION DESCRIPTION	CHKD	DATE
S	7151	REMOVED NOTE 1	JJH	11/4/2008
R	6619	UPDATE BOM, REDRAWN ON NEW FORMAT	PEB	12/4/2007