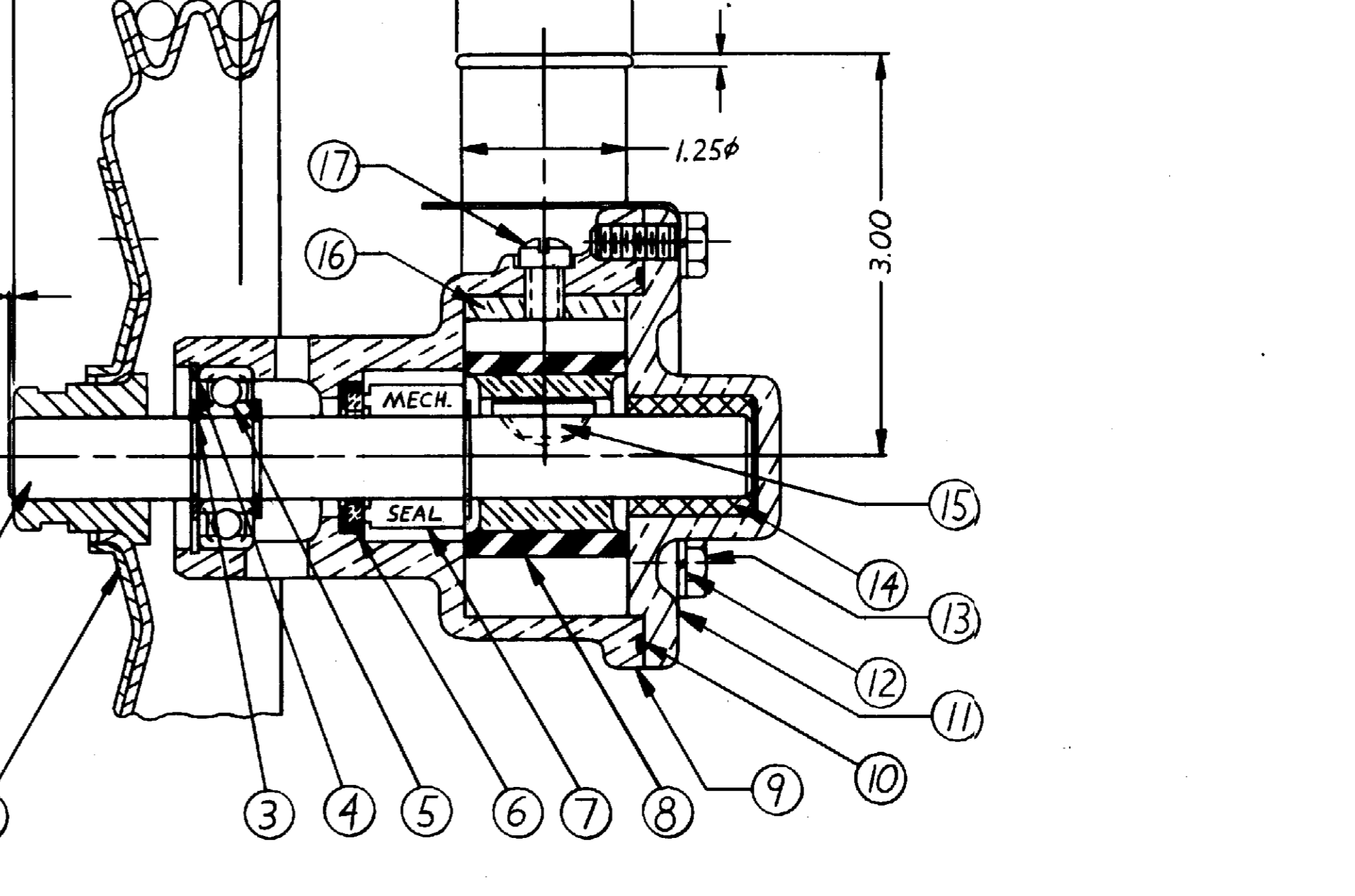
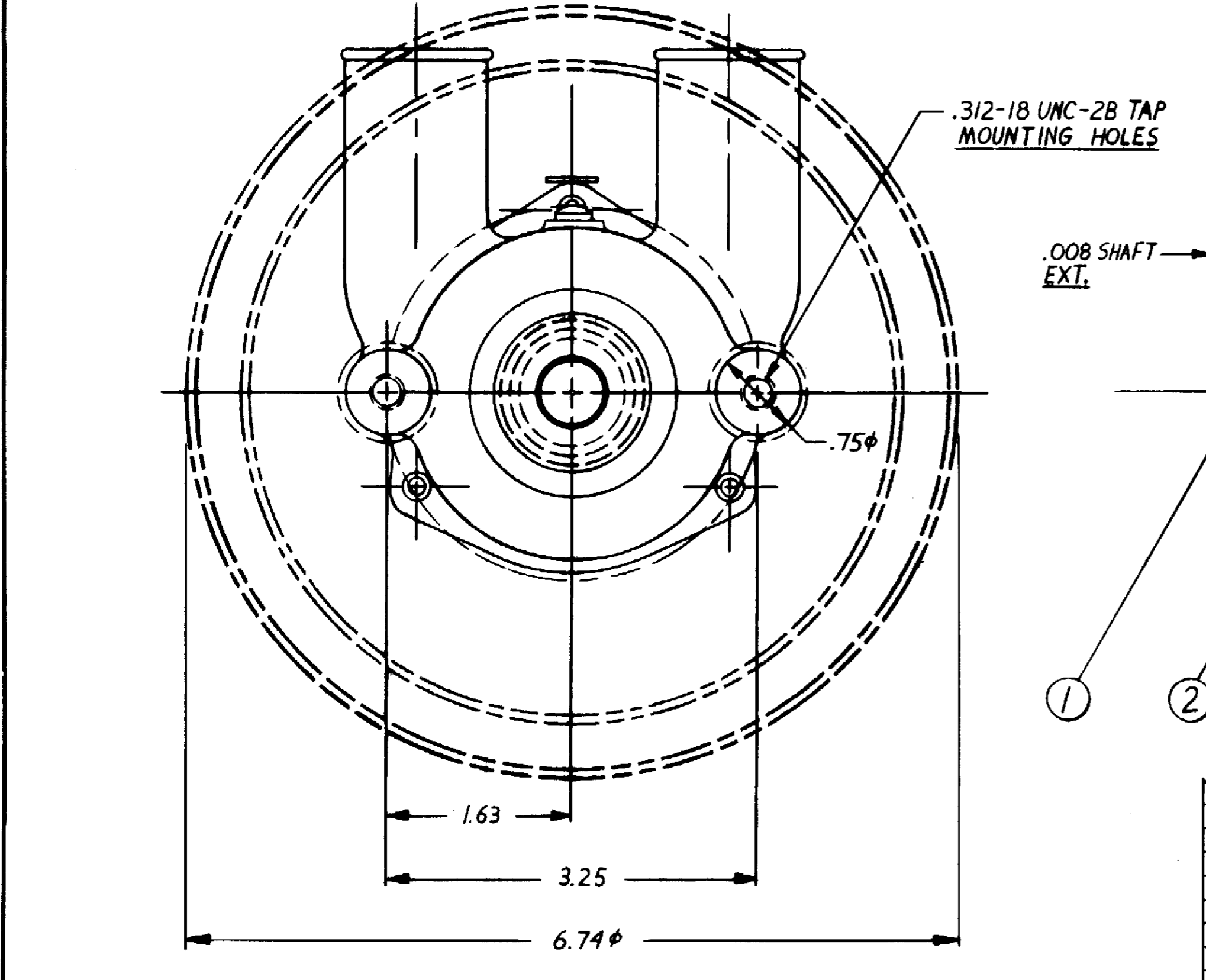
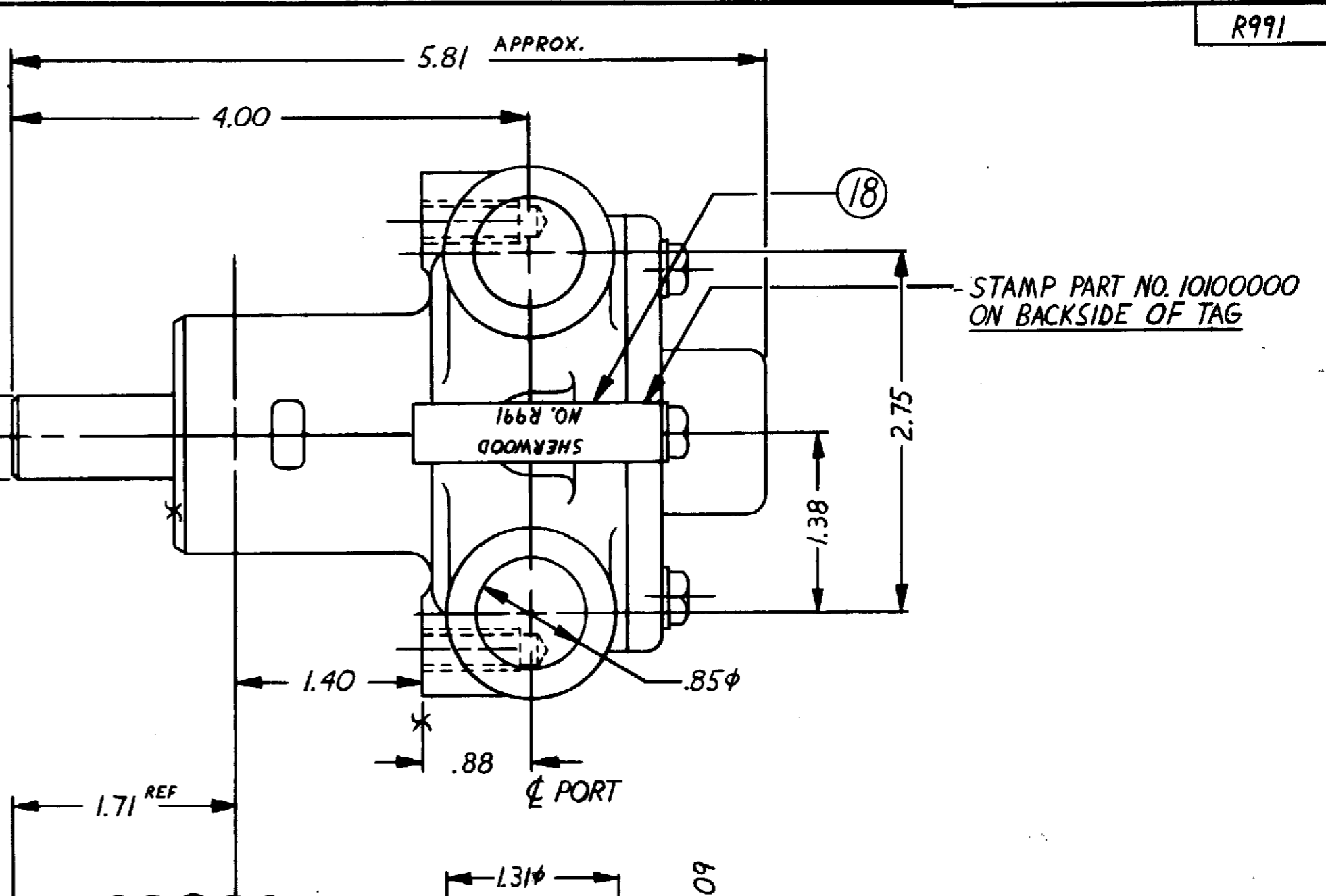


ITEM	PART NO.	DESCRIPTION	QTY.
1	18464	SHAFT	1
2	18446	PULLEY	1
3	4258	EXT. RET. RING	3
4	4259	INT. RET. RING	1
5	4257	BALL BEARING	1
6	10926	SEAL SEAT	1
7	18743	MECH. SEAL	1
8	9959	IMPELLER	1
9	18127	HOUSING	1
10	12231	O-RING	1
11	18428	COVER	1
12	12710	LOCKWASHER	3
13	18266	CAPSCREW 1/4-20 x 3/4	3
14	6333	BUSHING	1
15	12841	NO. 9 NON-ROK	1
16	15883	CAM	1
17	10515	CAM SCREW	1
18	13285	TAG	1
19	18744	SEAL & SEAT ASS'Y	ITEM 647
20	18465	COVER ASS'Y	ITEM 11814
1,3,4,5,9,10,12,16,19	18655	MAJOR REPAIR KIT	SERVICE (L)
8,10	18656	MINOR REPAIR KIT	SERVICE (M)

PACKAGING
 NO 11516 PALLET 1 REQ
 14120 TUBE CONTAINER 1 REQ
 14122 PAD 6 REQ
 18026 INSERTS 4 REQ
 16 PUMPS/LAYER x 4 LAYERS =
 64 PUMPS/PALLET

UNIT PACKAGING
 17631 CARTON 0 1 REQ
 12209 LABEL 1 REQ



△ PULLEY NO. 10251300 FURNISHED BY THERMO

REV.	DESCRIPTION	APPR.	DATE
M	N#18656 MINOR REPAIR KIT REVISED	AVB	2/11/89
L	N#18655 MAJOR REPAIR KIT REVISED	AVB	2/20/89
K	N#12841 KEY WAS N#4432	AVB	10/7/88
J	N#18744 SEAL ASS'Y WAS N#10927	AVB	10/7/88
I	N#18743 SEAL WAS N#10523	AVB	10/7/88
H	REDRAWN WITHOUT CHANGE	ML	8/2/88

UNLESS OTHERWISE SPECIFIED
 CAST DIMENSIONS ± .02
 FILLETS & RADI .06
 FINISH STOCK .07
 MACHINING TOLERANCE, INCHES
 XX ± .01, XXX ± .005
 SURFACE ROUGHNESS
 ANGLES ± 0° 30'
 CORNER BREAKS .01 MAX.
 PARALLISM .001
 FLATNESS .001
 SQUARNESS .001
 CONCENTRICITY .001
 ROUNDNESS .0002
 RUNOUT .001

SHERWOOD
 A DIVISION OF HYPRO CORPORATION
 6331 E. JEFFERSON AVE. • DETROIT, MICHIGAN 48207

DRAFTSMAN: ST DATE: 12/3/87 CHECKER: AVB DATE: 12/2/87 PROJ. NO.: 755

TITLE: RUBBER IMPELLER PUMP ASS'Y

MATERIAL: SEE DETAILS DWG. NO.: R991