

# 24" X 24" SEWAGE GRINDER BASIN PACKAGES

## SB24VRS10

The Myers 24" x 24" Sewage Basin is designed to be installed in a basement floor to collect sewage or effluent water from toilet, washer, dishwasher or a sink so that it can be pumped away with a sump pump or sewage pump.

### FEATURES

- ◆ **Pre-Assembled From Factory:** For quick and easy installation.
- ◆ **Cast Iron Sewage and Grinder Pumps:** For high performance.
- ◆ **Robust Polyethylene Structure:** For superior durability.
- ◆ **Specially Designed Bottom Grooves:** For easy leveling in rough soil.
- ◆ **Molded Torque Stops:** Keep pump in place.
- ◆ **38.5 Gallon Capacity:** For longer pump cycles prolonging the pump life.
- ◆ **5 Additional Flats:** For adding or changing inlet pipe location.

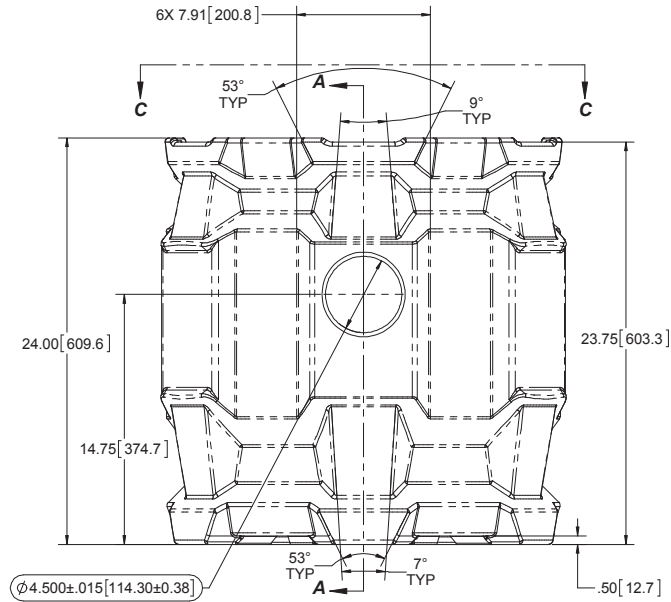
### SPECIFICATIONS

- ◆ **Motor HP:** 1 HP
- ◆ **Maximum Pump Capacity:** 52 GPM (185 LPM )
- ◆ **Maximum Shut-Off Head:** 60' (18.6 m)
- ◆ **Discharge:** 2"
- ◆ **Volts:** 115, 230
- ◆ **Full Load Amps:** 13.0 (115V), 7.0 (230V)
- ◆ **Phase:** Single
- ◆ **Cord Length:** 20' (6.1 m)
- ◆ **Switch Options:** PRE-T
- ◆ **Pump Impeller Material:** Thermoplastic
- ◆ **Pump Housing Material:** Cast iron
- ◆ **Pump Volute Material:** Cast iron
- ◆ **Basin Material:** Polyethylene
- ◆ **Basin Dimensions (W x H):** 24" x 24" (609 mm x 609 mm)
- ◆ **Basin Capacity:** 38.5 Gallons (145.7 Liters)
- ◆ **Lid Material:** Polyethylene
- ◆ **Warranty Years:** 3 years with start-up report

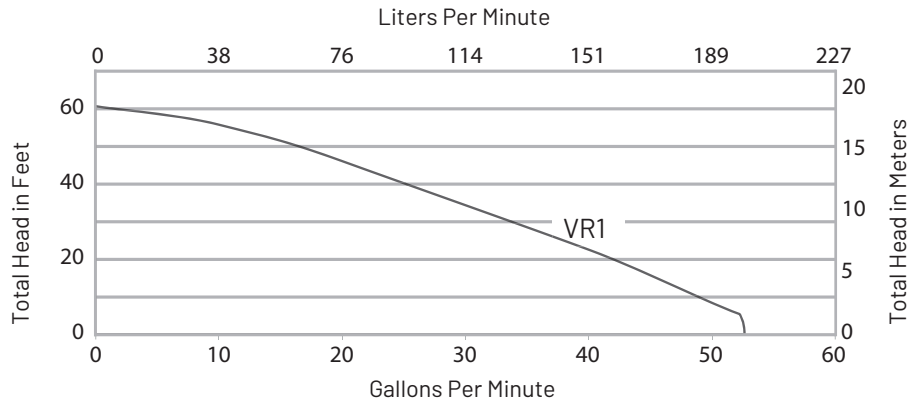


# WASTEWATER GRINDER PUMPS VRI SERIES

## DIMENSIONAL DATA - PACKAGE



## PUMP PERFORMANCE



## ORDERING INFORMATION

MODEL NUMBER	ENGINEERING NUMBER	HP	MAX CAPACITY	MAX HEAD	DISCHARGE NPT	SOLIDS HANDLING	VOLTS	FULL LOAD AMPS	PHASE	CORD LENGTH	SWITCH
SB24VRS10	-	1	52	60	2"	-	115	13.0	1	20'	PRE-T
SB24VRS1021	-	1	52	60	2"	-	230	7.0	1	20'	PRE-T



293 Wright St  
Delavan, WI 53115  
Ph: 888.987.8677  
Fx: 800.426.9446

490 Pinebush Rd, Unit 4  
Cambridge, Ontario N1T 0A5, Canada  
Ph: 800.363.7867  
Fx: 888.606.5484

pentair.com

All indicated Pentair trademarks and logos are property of Pentair. Third party registered and unregistered trademarks and logos are the property of their respective owners. Because we are continuously improving our products and services, Pentair reserves the right to change specifications without prior notice. Pentair is an equal opportunity employer.

©2023 Pentair. All Rights Reserved.

MY10018 (08-01-23)