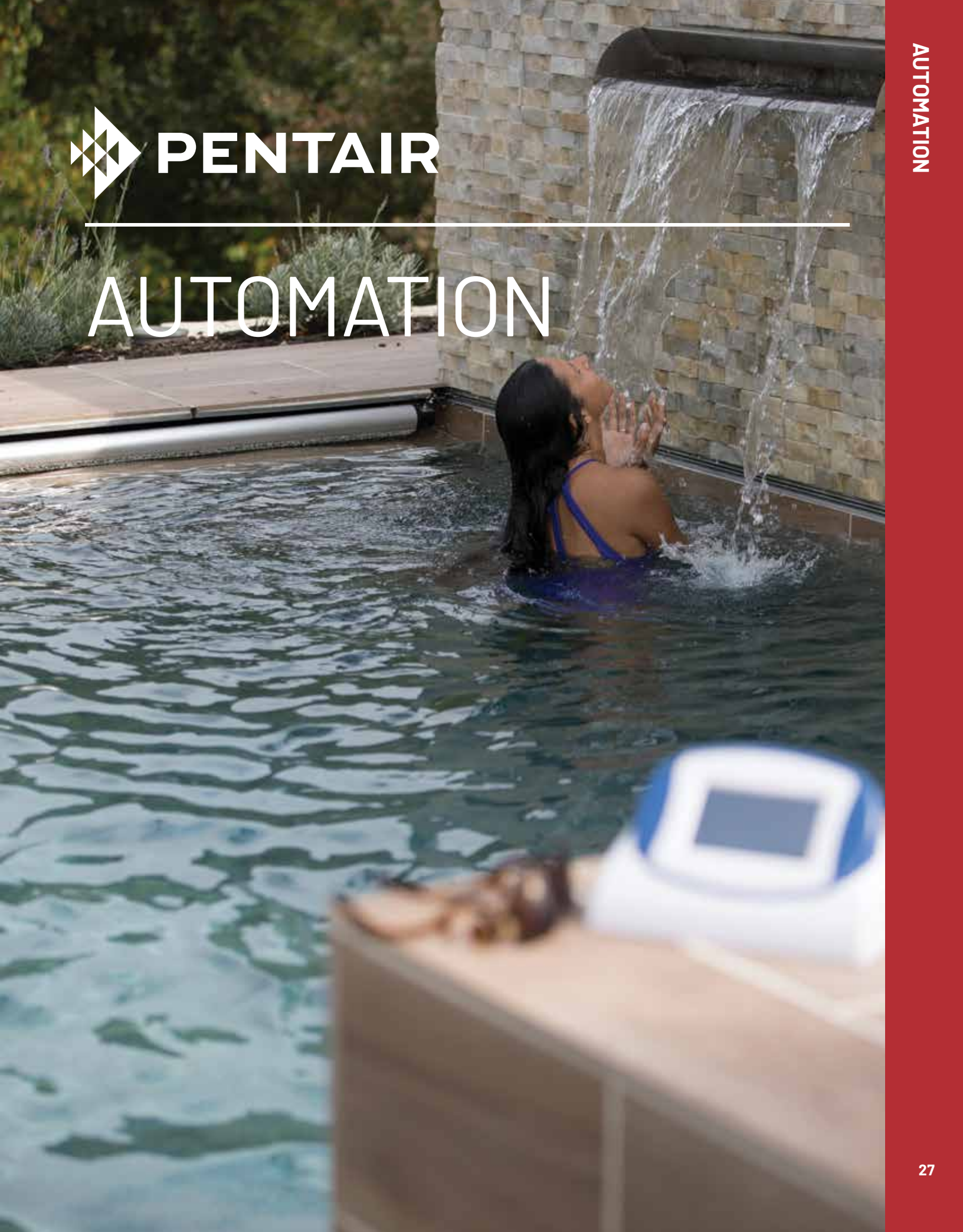




AUTOMATION



INTELLICENTER®

CONTROL SYSTEM FOR POOLS AND SPAS

TRADEGRADE

eco select®



IntelliCenter is Pentair's highest-capacity and most service-friendly control system ever. Communication with this system can be done on a wide range of devices and platforms. Many important service, programming and monitoring tasks can be done without an on-location service call. Order popular bundled systems and receive everything in one box or build systems a la carte.

Featured Highlights

- Easy to program, with step-by-step, on screen instructions
- Color touchscreen interface displays intuitive instructions in clear text and rich colors
- Convenient control from inside and outside the home via outdoor and indoor control panels and wireless remotes
- Remote control from anywhere: Android® and iOS® device, Web browsers on Mac® and PC computers and voice command with Amazon Echo®

CALIFORNIA PROPOSITION 65 WARNING

⚠️ **WARNING:** Cancer and Reproductive Harm.
 ⚠️ **AVERTISSEMENT:** Peut Causer le Cancer et des Dommages au Système Reproducteur.
 ⚠️ **ADVERTENCIA:** Cáncer y Daño Reproductivo.
www.p65warnings.ca.gov

Ordering Information

Product	Country	Description	Includes IntelliChlor® Cell	Includes SCG Transformer	Includes Two (2) IntelliValves
BUNDLED SYSTEMS (COMMON LOAD AND PERSONALITY KIT)					
523448	USA	IntelliCenter System (Load Center with i5P Personality Kit)	No	No	No
521903	USA	IntelliCenter System (Load Center with i8PS Personality Kit)	Yes, IC40	Yes	Yes
521904	USA	IntelliCenter System (Load Center with i8PS Personality Kit)	No	No	Yes
521905	USA	IntelliCenter System (Load Center with i5P Personality Kit)	Yes, IC40	Yes	No
521906	USA	IntelliCenter System (Load Center with i5PS Personality Kit)	Yes, IC40	Yes	Yes
521907	USA	IntelliCenter System (Load Center with i5PS Personality Kit)	No	No	Yes
521908	USA	IntelliCenter System (Load Center with i10PS Personality Kit)	Yes, IC40	Yes	Yes
523125	Canada	IntelliCenter System (Load Center with 5P-C/Personality Kit)	No	Yes	No
523126	Canada	IntelliCenter System with 5PS-C	No	Yes	Yes
523127	Canada	IntelliCenter System with 8PS-C	No	Yes	Yes

Note: Each system includes an outdoor wireless antenna. Pool/spa systems above include two IntelliValve® Valve Actuators.

INTELLICENTER UPGRADE KITS FOR EASYTOUCH AND INTELLITOUCH CONTROL SYSTEMS

522045	IntelliTouch/EasyTouch to Next Gen Upgrade Kit - i10P, for LC/PC	Systems manufactured prior to 2012 (2003 to 2012)
522046	IntelliTouch/EasyTouch to Next Gen Upgrade Kit - i10PS, for LC/PC	Systems manufactured prior to 2012 (2003 to 2012)
523218	IntelliTouch to Next Gen Upgrade Kit - i10D, for LC/PC (was 523048)	Systems manufactured prior to 2012 (2003 to 2012)
523530	IntelliTouch/EasyTouch to Next Gen Expansion Upgrade Kit LC/PC	Systems manufactured prior to 2012 (2003 to 2012)
522047	IntelliTouch/EasyTouch to Next Gen Upgrade Kit - i10P, for CLC/CPC	Systems manufactured after 2012
522048	IntelliTouch/EasyTouch to Next Gen Upgrade Kit - i10PS for CLC/CPC	Systems manufactured after 2012
523049	IntelliTouch to Next Gen Upgrade Kit - i10D, for CLC/CPC	Systems manufactured after 2012
523529	IntelliTouch/EasyTouch to Next Gen Expansion Upgrade Kit CLC/CPC	Systems manufactured after 2012

Android® is a registered trademark of Google, Inc. iOS® is a registered trademark of Cisco Technology in the United States and/or other countries. Mac® is a registered trademark of Apple, Inc. in the United States and/or other countries. Amazon Echo® is a registered trademark of Amazon Technologies, Inc. in the United States and/or other countries.

INTELLICENTER® LITE SYSTEM



INTELLICENTER LITE
SYSTEM

Featured Highlights

- Offers up to 5 relays
- Suitable for new pool installations or existing pools
- Breaker panel not always needed if there is an existing one
- Intuitive color touch screen makes it easy to set schedules
- Expandable to support additional relays and functionality with IntelliCenter daughter cards and expansion panels
- Optimal connection easily keeps optional devices connected and schedules intact
- Built-in WiFi connectivity and remote access capability via the mobile app for expanded control

IntelliCenter Lite options support five relays and each system includes a power center rather than a load center with breaker panels. These options should be used for IntelliCenter automation applications when a load center with a breaker panel is not needed.

Ordering Information

Product	Country	Description	Includes IntelliChlor® Cell	Includes SCG Transformer	Includes Two (2) Compool® Valve Actuators	Includes Two (2) IntelliValves
BUNDLED SYSTEMS (COMMON LOAD AND PERSONALITY KIT)						
523623	USA	IntelliCenter Lite System (power center with i5P personality kit)	No	No	No	No
523624	USA	IntelliCenter® Lite System With Standard Valve Actuators (power center with i5PS personality kit, Valve Control System and 2 Compool® valve actuators)	No	No	Yes	No
523625	USA	IntelliCenter® Lite System With IntelliValve Actuators (power center with i5PS personality kit and 2 IntelliValve® actuators)	No	No	No	Yes
523668	USA	IntelliCenter Lite System (power center with i5P personality kit) without High Power Wireless Link	No	No	No	No
523669	USA	IntelliCenter Lite System (power center with i5PS personality kit) without High Power Wireless Link	No	No	No	No

CALIFORNIA PROPOSITION 65 WARNING

⚠️ **WARNING:** Cancer and Reproductive Harm.
 ⚠️ **AVERTISSEMENT:** Peut Causer le Cancer et des Dommages au Système Reproducteur.
 ⚠️ **ADVERTENCIA:** Cáncer y Daño Reproductivo.
www.p65warnings.ca.gov

INTELLICENTER®

CONTROL SYSTEM FOR POOLS AND SPAS

AL A CARTE ORDERING
STEP 1: PICK YOUR LOAD AND POWER CENTER

Ordering Information

Product	Description	IntelliChlor Transformer
LOAD AND POWER CENTERS		
522041	Load Center (with Salt Chlorine Generator support)	Included
522042	Power Center (with Salt Chlorine Generator support)	Included
522043	Load Center (without Salt Chlorine Generator support)	Not Included
522044	Power Center (without Salt Chlorine Generator support)	Not Included

STEP 2: PICK YOUR PERSONALITY KIT

Product	Description	Body of Water Style	Motherboard	Daughter Card	No. of Additional Relays**
INTELLICENTER PERSONALITY KITS					
521909	IntelliCenter Personality Kit i5P	Single	i5P	N/A	0
521910	IntelliCenter Personality Kit i8P	Single	i5P	i8P	3
521911	IntelliCenter Personality Kit i10P	Single	i5P	i10P	5
521912	IntelliCenter Personality Kit i5PS	Shared Equipment	i5P	i5PS	0
521913	IntelliCenter Personality Kit i8PS	Shared Equipment	i5P	i8PS	3
521914	IntelliCenter Personality Kit i10PS	Shared Equipment	i5P	i10PS	5
521915	IntelliCenter Personality Kit i10D	Dual Equipment	i5P	i10D	5
522033*	IntelliCenter i5X Expansion Kit	—	i5X	N/A	0
522034*	IntelliCenter i10X Expansion Kit	—	i5X	i10x	5

*Expansion kits use an i5X motherboard. i5P motherboards cannot be used in expansion panels.

** Load center comes with five (5) 3 HP relays.

STEP 3: PICK YOUR ACCESSORIES

Product	Description	Notes
LOAD AND POWER CENTERS / SPACOMMAND REMOTES		
522035	IntelliCenter Indoor Control Panel, White Faceplate	
523058	IntelliCenter Indoor Control Panel, Tan Faceplate	
523059	IntelliCenter Indoor Control Panel, Black Faceplate	
522036	IntelliCenter Wireless Remote with Transceiver	
522038Z	IntelliCenter Valve Expansion Module	Adds six actuator ports to system (on main load center).
522039Z	Pool Cover Interface Expansion Board	Supports two covers.
523434	900 MHz Wireless Ethernet Link	
523557	900 MHz Wireless Ethernet Link Kit	Includes PoE module and Ethernet cables.
544425	Cable POE/Ethernet High Power Wireless Bundle	900 MHz Wireless Cables
521176	SpaCommand Remote, Black with 150 ft. cable	
521177	SpaCommand Remote, Black with 250 ft. cable	
521178	SpaCommand Remote, White with 150 ft. cable	
521179	SpaCommand Remote, White with 250 ft. cable	
521180	Mudbox Accessory for recessing SpaCommand Remote into deck or tile. Includes cover plate and bezel.	
INTELLICENTER TRAINING AID		
523248	IntelliCenter Laptop Trainer	

See page 386 for replacement parts.

INTELLISYNC®

PUMP CONTROL AND MONITORING SYSTEM

Featured Highlights

- Affordable pool automation with 24/7 pump control and monitoring via the Pentair Home App
- Easy Installation, plugs into a 120V outlet
- Freeze protection, helps keep the water from freezing in cold weather conditions
- Pool owners receive maintenance alerts or have them sent to their pool professional*

The IntelliSync Pump Control and Monitoring System gives pool owners smart device control of Pentair pumps such as IntelliFlo®1 and SuperFlo® Variable Speed Pumps. Through the convenience of the Pentair Home app, this pool pump controller lets you adjust the pool pump, plus get monitoring alerts on select models.



INTELLISYNC
PUMP CONTROL AND
MONITORING SYSTEM

Ordering Information

Product	Description
INTELLISYNC POOL PUMP CONTROL AND MONITORING SYSTEM	
523404	IntelliSync Control Unit
350122	IntelliFlo ¹ Communication Cable (Not Included)
353129Z	SuperFlo Communication Cable (Not Included)

*Ability to send information to pool professional is optional an subject to availability.

¹ Not compatible with IntelliFlo VF pumps. Connects with other IntelliFlo pump models and SuperFlo Variable Speed pumps.

Note: The current version of IntelliSync firmware does not support the Amazon® Alexa® Skill. Support for the Amazon Alexa Skill with IntelliSync systems is currently under development and targeted for release, later this year. Amazon® and Alexa® are registered trademarks of Amazon Technologies, Inc. in the United States and/or other countries.

If your wireless connection, Internet or the AccuWeather weather service website is not working the freeze protection feature will not be operable.

CHEMCHECK™

WATER QUALITY MONITORING SYSTEM

Featured Highlights

- Continuously monitors pool water chemistry performance and pool water temperature
- Sends alerts to a smart device when pool or spa water needs attention through the easy-to-use Pentair Home app
- Recommends ideal chemical dosage to keep the pool water balanced
- Keeps a record of all pool water chemistry information



CHEMCHECK WATER QUALITY MONITORING SYSTEM

ChemCheck stays one step ahead of pool water chemistry using Oxidation Reduction Performance (ORP). ORP analyzes more than just the amount of chemicals in the water, but also how well those chemicals are performing.

ChemCheck monitors pH levels and other factors to help determine the correct actions that are right for the pool – and sends alerts and advise directly to smart device using the Pentair Home app.

Ordering Information

Product	Description	Weight	Dimensions
CHEMCHECK WATER QUALITY MONITORING SYSTEM			
523402	ChemCheck Battery Control Unit	8 lbs	16.25" L x 13.375" W x 9.5" H
523476	ChemCheck 120V Control Unit	8 lbs	16.25" L x 13.375" W x 9.5" H

SCREENLOGIC2® INTERFACE

FOR INTELLITOUCH® AND EASYTOUCH® AUTOMATION SYSTEMS

TRADEGRADE



Add a ScreenLogic2 Interface to Pentair automation systems and gain pool access from practically anywhere at any time using your Android® and iOS® device, Web browsers on Mac® and PC computers

Featured Highlights

- Use an Android® and iOS® device, Web browsers on Mac® and PC computers to control pool functions from practically anywhere.
- Remotely manage using the ScreenLogic2 Interface Application
- Easily change, track and monitor history of pH and ORP levels when using IntelliChem® Chemical Control System with IntelliTouch or EasyTouch Automation
- ScreenLogic2 Interface app now allows full color lighting control for both IntelliBrite® LED Pool/Spa/Landscape Lights and MagicStream® Laminars
- All ScreenLogic2 Interface Kits come with a protocol adapter and ScreenLogic2 Interface PC program on CD

ScreenLogic2 Interface allows you to control the key functions of your pool and spa using the IntelliTouch and EasyTouch control systems, using controllers such your Android® and iOS® device, Web browsers on Mac® and PC computers. The ScreenLogic Bundle conveniently includes the Protocol Adapter (520500 and the ScreenLogic Interface Wireless Connection Kit (523434).

Ordering Information

Product	Description	
SCREENLOGIC2 INTERFACE CONTROL SYSTEMS		
522104	ScreenLogic Bundle (includes 520500 and 523434)	
520500	Protocol Adapter Only	
520639	High Powered ScreenLogic Interface Wireless Connection Kit – Includes two radio transmitters that eliminate the need to run cable from the Load Center into the home where the protocol adapter and wireless router are located. This is for large properties where the standard 523434 does not work.	
523434	ScreenLogic Wireless Connect Kit	
523557	900 MHz Wireless Ethernet Link Kit	Includes PoE module and Ethernet cables.
544425	Cable POE/Ethernet High Power Wireless Bundle	900 MHz Wireless Cables

* All ScreenLogic2 Interface Kits come with a protocol adapter

Macintosh® and Mac® are registered trademarks of Apple Inc. in the United States and/or other countries.

Android® is a trademark of Google LLC., in the United States and/or other countries.

iOS® is a registered trademark of Cisco Technology, Inc. in the United States and/or other countries.

NOTE: THE PENTAIR SCREENLOGIC INTERFACE FOR MACINTOSH® DESKTOP COMPUTERS IS NOT COMPATIBLE WITH 64BIT SPEED MACINTOSH CATALINA OPERATING SYSTEM. CUSTOMERS WHO UPDATE THEIR MAC® DESKTOP COMPUTERS TO THE NEW CATALINA MACOS WILL NO LONGER BE ABLE TO USE SCREENLOGIC DESKTOP INTERFACE

CALIFORNIA PROPOSITION 65 WARNING

▲ **WARNING:** Cancer and Reproductive Harm.
▲ **AVERTISSEMENT:** Peut Causer le Cancer et des Dommages au Système Reproducteur.
▲ **ADVERTENCIA:** Cáncer y Daño Reproductivo.

www.p65warnings.ca.gov
P65BTR-A

SCREENLOGIC2® INTERFACE (CONT'D)

CONNECTION DIAGRAM

ScreenLogic2 Interface allows you to control the key functions of your pool and spa using the IntelliTouch and EasyTouch control systems, using controllers such your Android® and iOS® device, Web browsers on Mac® and PC computers. The ScreenLogic Bundle conveniently includes the Protocol Adapter (520500 and the ScreenLogic Interface Wireless Connection Kit (523434).

ScreenLogic2 Interface is easy to setup. A wireless connection kit is provided to eliminate the need to run cable where impossible or impractical to do so.

Personal Computer - A PC or Laptop. Connects to a wireless router and the ScreenLogic2 Interface Protocol adapter for control of IntelliTouch and EasyTouch Automation pool/spa systems. Requires a PC/Laptop (Windows XP® or later) with Ethernet/RJ45 adapter installed.

Indoor Control Panel - This control panel for IntelliTouch and EasyTouch systems consists of a backlit LCD and connects into the Load Center for control of IntelliTouch or EasyTouch pool and spa systems.

MobileTouch® Wireless or EasyTouch Wireless Remote - This wireless control panel has a backlit LCD. Receives and transmits commands via the Transceiver antenna located at the Load Center.

Existing Wireless Router - Connects to the PC or Laptop via Ethernet connection.

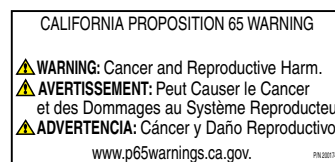
Protocol Adapter - Connects to wireless router via Ethernet connection and to Personality board (Load/Power Center) via a four-wire 22-AWG cable or provided wireless connection kit.

IntelliTouch or EasyTouch Automation Load Center or Power Center - The main control center, located at the equipment pad controls pump, heater, and light relays. It receives commands via Protocol adapter, and wireless and wired control panels connected to the Personality board.

MobileTouch Wireless and EasyTouch Wireless Remote Transceiver Antenna - This antenna sends and receives commands to and from the MobileTouch Wireless control panel.

Windows XP® is a registered trademark of Microsoft Corporation.

NOTE: THE PENTAIR SCREENLOGIC INTERFACE FOR MACINTOSH® DESKTOP COMPUTERS IS NOT COMPATIBLE WITH 64BIT SPEED MACINTOSH CATALINA OPERATING SYSTEM. CUSTOMERS WHO UPDATE THEIR MAC® DESKTOP COMPUTERS TO THE NEW CATALINA MACOS WILL NO LONGER BE ABLE TO USE SCREENLOGIC DESKTOP INTERFACE



INTELLITOUCH® AUTOMATION SYSTEMS

ADVANCED AUTOMATION SYSTEMS FOR POOL AND SPA

TRADEGRADE



Featured Highlights

- UltraTemp® Heat Pump Cooling Support
- SpaCommand® Spa-Side Remote Control of IntelliFlo® Pump
- MagicStream® Laminar support
- IntelliChem® Controller support
- ColorVision® Bubbler support

IntelliTouch Automation offers superior control systems from small to the most ambitious pool and spa designs including water features and spectacular lighting effects. IntelliTouch Automation Systems offer innovative technology and a wide range of wireless and wired control panels that are easy to program with simple menus to enable pool owners to create and change programs without complication. Add a ScreenLogic2 Interface to Pentair automation systems and gain pool access from practically anywhere at anytime using your Android® and iOS® device, Web browsers on Mac® and PC computers

IntelliTouch Automation offers advanced control technology to suite individual needs including:

- **ScreenLogic2® Interfaces** – Enables IntelliTouch Automation users to control their pool and spa features using wireless devices. ScreenLogic2 Interface systems now have advanced features such as remote monitoring and control over the internet and email alerts for specific events. Other wired interface options are also available to control pool and spa features via a desktop or laptop PC from within the home or on the road.
- **Salt Chlorine Feature** – Enables IntelliTouch Automation to control and monitor popular Salt Chlorine Generators including Pentair Aquatic Systems' IntelliChlor® Salt Generator, Goldline Controls®, AutoPilot®, and AutoClear® from many of the available user interfaces. Users do not have to adjust the salt chlorine generator at the equipment pad.
- **Support for IntelliFlo® Pumps** – The IntelliFlo Pump is the intelligent swimming pool pump that is changing all the rules. Adaptable to any application up 230 volts and 160 gallons per minute, you simply program the pump speed to suit the application. The IntelliFlo Pump then dials in the perfect power factor. IntelliFlo Pumps constantly monitor water flow and electrical current, making sure that the filtration system is operating at peak efficiency.
- **Advanced Color Lighting** – Enables users to experience a world of lighting animation when teamed up with IntelliBrite® 5g Color Lights, GloBrite® LED Lights, MagicStream Laminars, and ColorVision Bubblers. One of the most dramatic innovations is the Swimming Colors feature in which colors appear to swim through the water, pouring into one another.

Technical Note: Lights must be connected to separate Auxiliary Circuits for Swimming Colors to function.

IntelliTouch Automation systems offer the flexibility to handle from 5 to 40 circuits that can be used to control any combination of pumps, lights, water features, etc. As an added benefit, user-configurable circuits (Feature Circuits) can also be used to control these combinations of features and more. Feature Circuits even add Macro possibilities, where any number of circuits can be combined on a single button. This gives the pool owner the ability to set up “themes” with custom names all with one press of a single button.

IntelliTouch Automation users can also dim any high voltage incandescent light such as Pentair Amerlite® and SpaBrite® Lights up to eight levels using the IntelliTouch Automation Controller Dimmer Module (P/N 520406). The dimmer module supports multiple lights from 100 watts up to 1,000 watts and installs in a standard relay location. Any number of dimmers (up to 10 maximum) may be used with a maximum combined load of 4,000W in a single Load Center.

Goldline Controls® is a registered trademark of Hayward Industries, Inc.

AutoPilot® is a registered trademark of Aquacal AutoPilot, Inc.

AutoClear® is a registered trademark of Zodiac Pool Systems, Inc.

Android® is a trademark of Google LLC.

Macintosh and iOS are registered trademarks of Apple Inc. in the United States and/or other countries.

INTELLITOUCH® AUTOMATION ENCLOSURE KITS

ORDERING AN INTELLITOUCH AUTOMATION SYSTEM – STEP 1:

TRADEGRADE

Featured Highlights

- **Load Center** – Includes built-in sub panel (150 AMPS) breaker base capable of holding up to ten 1 inch breakers. Also includes five 25 AMP 3 HP relays, 120V/240V transformer with secondary side circuit protection. Multiple knockouts for 1/2 inch to 1-1/4 inch conduit are supplied as well as a GFCI receptacle side knock out. The Load Center provides ample space for all high and low voltage wiring needs.
- **Power Center** – Offers a smaller footprint than the Load Center. The Power Center does not include a circuit breaker base. Users should choose this enclosure if they already have existing circuit breakers/sub-panel for their equipment.



Power Center

Load Center
(Shown with Personality Kit)

Pentair Aquatic Systems' Load Center and Power Center features more knockouts and 150 Amps limit as well as space for 10 breakers on the Load Center. For added convenience, IntelliTouch Automation enclosures can be ordered and integrated with the IntelliChlor® Salt Chlorine Generator transformer so a separate power center is not required.

Ordering Information

Product	Description	3 HP Relays Std. / Max.	Number of Circuit Breaker Spaces	Transformer Voltage	Size
INTELLITOUCH AUTOMATION ENCLOSURE KITS WITH INTELLICHLOR TRANSFORMER					
521213	Load Center	5 / 10	10	115V / 230V	26 in. H x 17 in. W x 5-1/4 in. D
521214	Power Center	5 / 10	None	115V / 230V	20 in. H x 17 in. W x 5-1/4 in. D
INTELLITOUCH AUTOMATION ENCLOSURE KITS WITHOUT INTELLICHLOR TRANSFORMER					
521215	Load Center	5 / 10	10	115V / 230V	26 in. H x 17 in. W x 5-1/4 in. D
521216	Power Center	5 / 10	None	115V / 230V	20 in. H x 17 in. W x 5-1/4 in. D

CALIFORNIA PROPOSITION 65 WARNING
 ⚠ **WARNING:** Cancer and Reproductive Harm.
 ⚠ **AVERTISSEMENT:** Peut Causer le Cancer et des Dommages au Système Reproducteur.
 ⚠ **ADVERTENCIA:** Cáncer y Daño Reproductivo.
www.p65warnings.ca.gov PN 202114

INTELLITOUCH® AUTOMATION PERSONALITY KITS

ORDERING AN INTELLITOUCH AUTOMATION SYSTEM – STEP 2:

TRADEGRADE

i5+3S Personality Kit
(for single body of water)



i9+3 Personality Kit
(shared equipment)



Featured Highlights

- Shared Equipment: Pool and spa combinations with shared filtration system – Pool owners can enjoy the convenience of motorized valves for water flow separation between pool and spa
- Dual Equipment: Pool and Spa Dual Sets of Equipment – The IntelliTouch Control System i10+3D provides advanced automation for a pool and spa using two separate sets of equipment. The IntelliTouch Automation Personality Kit controls ten pump and/or lighting circuits and two heaters.
- Single Equipment: Pool Only or Spa Only Applications – The IntelliTouch Automation i5+3S and i9+3S provide advanced automation for a single body of water

There are six Personality Kit models available for various pool and spa combinations. Each Personality Kit provides complete pool and spa controls that are fully programmable. Every circuit has a countdown timer, ability to do one-time-use programs, salt generation interface for popular salt chlorinators, spectacular colored pool/spa lighting effects, along with solar control capabilities. In addition, there are various options available including light dimming, smart home interface, spa-side remote switches, valve actuators for water flow control, additional indoor wired or wireless user interface control panels, and even telephone remote control.

Ordering Information

Product	Model Number	High Voltage Circuits	3 HP Relays Kit / Total *	Feature Circuits	Valve Actuators Std. / Opt. / w/Valve Expansion Module**
POOL/SPA – SHARED EQUIPMENT					
<i>Pump, Filter & Heater shared between Pool and Spa by two automated 3-Way Valves.</i>					
521219	i5+3	Filter + 4 Aux	0 / 5	10	2 / 4 / 7
521220	i7+3	Filter + 6 Aux	2 / 7	10	2 / 4 / 7
521221	i9+3	Filter + 8 Aux	4 / 9	10	2 / 4 / 7
POOL/SPA – DUAL EQUIPMENT					
<i>Two Pumps, Two Filters & Two Heaters for separate Pool and Spa.</i>					
521222	i10+3D	2 Filters + 8 Aux	5 / 10	10	0 / 2 / 5
POOL OR SPA – SINGLE BODY OF WATER					
<i>Pump, Filter & Heater for an individual Pool or Spa.</i>					
521223	i5+3S	Filter + 4 Aux	0 / 5	10	0 / 2 / 5
521224	i9+3S	Filter + 8 Aux	4 / 9	10	0 / 2 / 5
EXPANSION KITS					
521225	i5X Expansion Kit		0 / 5	0	0 / 2 / 5
521226	i10X Expansion Kit		5 / 10	0	0 / 2 / 5

* Load Center or Power Center, purchased separately, includes five 3 HP relays.

** Valve expansion module adds three additional valves to be used (P/N 520285).

Note: i5 and i5S are now i5+3 and i5+3S.

Note: Valve actuators now come with 25 ft. cables for wiring convenience.

CALIFORNIA PROPOSITION 65 WARNING

▲ **WARNING:** Cancer and Reproductive Harm.
▲ **AVERTISSEMENT:** Peut Causer le Cancer et des Dommages au Système Reproducteur.
▲ **ADVERTENCIA:** Cáncer y Daño Reproductivo.

www.p65warnings.ca.gov
PN20171A

See page 387 for replacement parts.

INTELLITOUCH® AUTOMATION INTERFACE KITS

ORDERING AN INTELLITOUCH AUTOMATION SYSTEM – STEP 3:

TRADEGRADE



MobileTouch® Wireless Remote



Indoor Control Panel

One or more of the following Standard or ScreenLogic2® Interface Kits can be used with IntelliTouch Automation Personality Kits. For example, use an Android® and iOS® device, Web browsers on Mac® and PC computers and Indoor Control Panels can be mixed or matched throughout the home. ScreenLogic2 Interface systems now have advanced features such as remote monitoring and control over the internet and email alerts for specific events. The Interface options include:

Ordering Information

Product	Description
STANDARD INTERFACES	
520138	Indoor Control Panel – 3-3/4 in. monochrome backlit LCD. Wired to the Load or Power Center.
520906	MobileTouch Wireless – Wireless control panel with transceiver. 3-3/4 in. monochrome backlit LCD.
SCREENLOGIC2 INTERFACES	
522104	ScreenLogic Bundle (includes 520500 and 523434 in one box).
520500	Protocol Adapter Only
SCREENLOGIC2 INTERFACE ACCESSORIES	
523434	Wireless Connection Kit Complete, antenna and transceiver

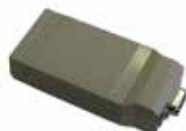
CALIFORNIA PROPOSITION 65 WARNING
 ⚠️ **WARNING:** Cancer and Reproductive Harm.
 ⚠️ **AVERTISSEMENT:** Peut Causer le Cancer et des Dommages au Système Reproducteur.
 ⚠️ **ADVERTENCIA:** Cáncer y Daño Reproductivo.
www.p65warnings.ca.gov PR 305714

INTELLITOUCH® AUTOMATION ACCESSORIES

TRADEGRADE



SpaCommand® Spa-Side Remote (also available in black)



i-Link Home Automation Adapter



IntelliTouch Controller Dimmer Module



Outdoor Control Panel (installs in the Load or Power Center)



Load Center

CALIFORNIA PROPOSITION 65 WARNING
 ⚠️ WARNING: Cancer and Reproductive Harm.
 ⚠️ AVERTISSEMENT: Peut Causer le Cancer et des Dommages au Système Reproducteur.
 ⚠️ ADVERTENCIA: Cáncer y Daño Reproductivo.
www.p65warnings.ca.gov PH.002114

Ordering Information

Product	Description
INTELLITOUCH ACCESSORIES	
520442	i-Link Home Automation Adapter Interface for IntelliTouch Automation – Enables homeowners using Home Automation systems such as Elan Home Systems®, Crestron®, AMX®, Vantage®, Lutron®, Control4® and others to control IntelliTouch Automation basic features via their Home Automation control interface. Call for other Home Automation system compatibility.
520406	IntelliTouch Controller Dimmer Module – Enables users to dim their Amerilite® and SpaBrite® Lights up to eight levels (30% to 100%). Each dimmer module supports multiple lights from 100 watts up to 1,000 watts combined load using 120VAC (220VAC not supported). For example, a 500W and a 100W Amerilite Light (total 600W) could be used with one dimmer module. Installs in a standard relay location. Any number of dimmers (up to 10 maximum) may be used with a maximum combined load of 4,000W. Note: Expansion Center Kit(s) may be required to house multiple dimmer modules (models i5x (P/N 521225) or i10x (P/N 521226). The IntelliTouch Controller Dimmer Module is only designed to be used with pool and spa lights and not backyard lighting systems.
520403	Dual Heater Kit – This kit is for use with IntelliTouch systems and enables homeowners to utilize a gas heater and heat pump. The IntelliTouch system determines which heat source is appropriate given the conditions. This kit disables most solar heating controls. The kit includes a heater relay and temperature sensor.
SPACOMMAND TEN-FUNCTION SPA-SIDE REMOTE	
521178	SpaCommand Remote, White with 150 ft. cable
521176	SpaCommand Remote, Black with 150 ft. cable
521179	SpaCommand Remote, White with 250 ft. cable
521177	SpaCommand Remote, Black with 250 ft. cable
521180	Mudbox Accessory for recessing SpaCommand Remote into deck or tile. Includes cover plate and bezel.

Product	Description
ACCESSORIES FOR INTELLITOUCH SYSTEMS	
521485	IntelliValve® Valve Actuator
520199	1000 ft. cable, four conductor, 22 AWG
520106	3HP Relay for IntelliTouch
RCS1	Additional Spa Jets Switch (for multiple jet pumps)
ESO3	Emergency Shut-Off Switch w/Audible Alarm
520138	Indoor Control Panel for IntelliTouch (White), additional
520967	Light Direct Connect Kit (eliminates need for j-box)
6870002	Telephone remote control for any single circuit, usually Spa mode

Product	Description
ACCESSORIES FOR INTELLITOUCH SYSTEMS	
520272	Air & Water Temperature Sensor (white)
522101	Solar Temperature Sensor (black)
520198	Two-Speed 3HP Relay
263045	Valve Actuator
520285	Valve module for adding up to 3 valve actuators
520818	Com Port Expansion Module
AI101	Surge Suppressor for 115V transformer wiring
AI201	Surge Suppressor for 230V transformer wiring

Elan Home Systems® is a registered trademark of Core Brands, LLC.
 Crestron® is a registered trademark of Crestron Electronics, Inc.
 AMX® is a registered trademark of AMX, L.L.X., LTD.

Vantage® is a trademark of Legrand Home Systems, Inc.
 Lutron® is a registered trademark of Lutron Electronics, Inc.
 Control4® is a registered trademark of Control4 Corp.

INTELLITOUCH® AUTOMATION ACCESSORIES (CONT'D)

Featured Highlights

- **MobileTouch® Wireless Remote Accessory** – Allows any IntelliTouch Automation System to have a wireless remote with all capabilities of the indoor control panel. With an average range of 500 feet, pool owners have system control anywhere around the home or yard. Installation is simple, and requires no high voltage wiring. Powered by a replaceable rechargeable lithium-ion battery. Includes an AC/DC adapter for recharging. Water resistant, wireless user interface control panel with high-resolution 3-3/4 in. monochrome backlit LCD. Rechargeable lithium-ion battery. Easy to use control buttons with customizing feature for naming circuits.
- **iS4 Four-Function Spa-side Remote** – Provides control of any four functions, such as pool, spa, auxiliary circuits (AUX 1-8), Feature Circuits, Macros, Heater Enable and Heat Boost. Available in White, Black and Gray. Four cable lengths are available:
- **Expansion Kits** – Models i5X and i10X, offer five or ten additional Auxiliary Circuits for systems i9+3, i9+3S and i10+3D. Each IntelliTouch Automation Expansion Kit requires a Load Center (P/N 521215) or Power Center (P/N 521216). Up to three Expansion Kits and Load or Power Centers may be added to a system, for control of up to 38 Auxiliary Circuits (40 auxiliary circuits for i10+3D).



CALIFORNIA PROPOSITION 65 WARNING
 ⚠️ **WARNING:** Cancer and Reproductive Harm.
 ⚠️ **AVERTISSEMENT:** Peut Causer le Cancer et des Dommages au Système Reproducteur.
 ⚠️ **ADVERTENCIA:** Cáncer y Daño Reproductivo.
www.p65warnings.ca.gov P/N20071A

Ordering Information

Product	Description
MOBILETOUCH WIRELESS REMOTE ACCESSORIES	

520906	MobileTouch Wireless Accessory Kit includes wireless remote and transceiver module with antenna.
520907	Additional MobileTouch Wireless remote only

Product	Color	Product	Color	Product	Color	Product	Color
iS4 REMOTE WITH 50 FT. CABLE		iS4 REMOTE WITH 100 FT. CABLE		iS4 REMOTE WITH 150 FT. CABLE		iS4 REMOTE WITH 250 FT. CABLE	
521883	White	521885	White	521887	White	521889	White
521884	Gray	521886	Gray	521888	Gray	521890	Gray
521891	Black	521892	Black	521893	Black	521894	Black

Product	Description	3 HP Relays Kit / Total *	Feature Circuits	Valve Actuators Std. / Opt. / w/Module
EXPANSION KITS				
521225	i5X Expansion Kit	0 / 5	0	0 / 2 / 5
521226	i10X Expansion Kit	5 / 10	0	0 / 2 / 5

* Expansion Kit requires Load or Power Center to be purchased separately, which includes five 3HP relays.

INTELLITOUCH® AUTOMATION SALES & SERVICE TOOLS

Product	Description
INTELLITOUCH AUTOMATION SALES AND SERVICE TOOLS	
520396	Service Panel for IntelliTouch Automation – If access to the Indoor Control Panel is not available, this service panel can be used by service personnel to help setup, customize, or troubleshoot an IntelliTouch Automation system from the control panel at the equipment pad. Includes an attached 6-foot cable for easy connection to the Personality board.
520400	IntelliTouch Automation Laptop Trainer – Perfect for use in dealer showrooms or by sales personnel to demonstrate complete system functionality to prospective customers.
520352	IntelliTouch Automation Demo Unit – Perfect for use in dealer showrooms or by sales personnel to demonstrate IntelliTouch Automation system functionality with Indoor Control Panel interface option to prospective customers. Fully functioning control panel.
520957	Automation Flash Programming Kit
520461	Quick Reference Card – Credit card size reference guide. Includes step-by-step instructions to set a House Address for Indoor and MobileTouch® control panels, iS10 Spa-Side remote, and Expansion Load or Power Center.



IntelliTouch Automation Demo Unit



IntelliTouch Automation Laptop Trainer



Quick Reference Card



IntelliTouch Automation Service Panel

EASYTOUCH® CONTROL SYSTEMS

POOL/SPA CONTROL SYSTEMS

TRADEGRADE



EasyTouch System



521885 - iS4 Remote Control



520547 - EasyTouch wireless for 8 circuit systems

Featured Highlights

EasyTouch Features include:

- UltraTemp® Heat Pump integration
- Supports 2 IntelliFlo® Pumps
- Supports 8 Feature circuits
- MagicStream® Laminar support
- IntelliChem® Controller support
- Works with ScreenLogic2® Interface
- IntelliBrite® Pool and Spa Light support
- SpaCommand® Spa-Side Remote support and control of IntelliFlo® Pump
- Optional Controllers for added convenience: Indoor Control Panel (for 4 or 8 circuit systems), a Wireless controller (for 4 or 8 circuit systems), a 4-button spa side remote, and SpaCommand spa-side remote.
- All functions controlled with easy, one-button access from the self-contained load center or optional controllers. No need to memorize operating sequences, open and close valves, or reset time clocks and thermostats.
- Built-in diagnostics include automatic verification of the display, microprocessor, switches, indicators, relay outputs, valve outputs, sensor inputs, and communication ports as well as a diagnostic screen that reports failures for troubleshooting and repair purposes
- Includes 150 amp breaker base with space for ten 1-inch breakers
- UL and cUL approved
- Dimensions: 26 in. H x 17 in. W x 5-1/4 in. D

The EasyTouch Control System family offers control for homeowner's looking for an easy to use pool/spa control system. EasyTouch allows full control of all pool/spa features including advanced features such as colored lighting and IntelliChlor® Salt Chlorine Generator support. Every EasyTouch system includes an easy to use control panel that is built into the outdoor enclosure. This control panel allows for full system setup, programmability, and everyday operation. In addition, there are several other available remote interface choices. The EasyTouch systems come in a variety of configurations: Pool only or Spa only, Pool/Spa with shared equipment, and also integrated with Pentair IntelliChlor Salt Chlorine Generator.

CALIFORNIA PROPOSITION 65 WARNING

⚠ **WARNING:** Cancer and Reproductive Harm.

⚠ **AVERTISSEMENT:** Peut Causer le Cancer et des Dommages au Système Reproducteur.

⚠ **ADVERTENCIA:** Cáncer y Daño Reproductivo.

www.p65warnings.ca.gov

PR120171A

Ordering Information

Product	Model
EASYTOUCH SYSTEMS WITHOUT INTELLICHLOR TRANSFORMER BUILT-IN	
520591	EasyTouch 4P – Single Body (base system - no ICP, no actuators)
520703	EasyTouch 8P – Single Body (base system - no ICP, no actuators)
520538	EasyTouch 4 – Pool/Spa (base system - no ICP, 2 actuators)
520540	EasyTouch 8 – Pool/Spa (base system - no ICP, 2 actuators)
EASYTOUCH SYSTEMS WITH INTELLICHLOR TRANSFORMER AND INTELLICHLOR CELL	
520592	EasyTouch 4PSC-IC20 – Single Body (includes SCG integration & IC20 cell)
520593	EasyTouch 4PSC-IC40 – Single Body (includes SCG integration & IC40 cell)
520704	EasyTouch 8PSC-IC20 – Single Body (includes SCG integration & IC20 cell)
520705	EasyTouch 8PSC-IC40 – Single Body (includes SCG integration & IC40 cell)
520542	EasyTouch 4SC-IC20 – Pool/Spa (includes SCG integration & IC20 cell, 2 actuators)
520543	EasyTouch 4SC-IC40 – Pool/Spa (includes SCG integration & IC40 cell, 2 actuators)
520544	EasyTouch 8SC-IC20 – Pool/Spa (includes SCG integration & IC20 cell, 2 actuators)
520545	EasyTouch 8SC-IC40 – Pool/Spa (includes SCG integration & IC40 cell, 2 actuators)
521150	EasyTouch 8SC-IC60 – Pool/Spa (includes SCG integration & IC60 cell, 2 actuators)
CANADIAN EASYTOUCH SYSTEMS	
520914	EasyTouch 4P-C – Single Body (salt ready system, cell must be ordered separately)
520915	EasyTouch 8-C – Pool/Spa (salt ready system, cell must be ordered separately)
520911	IntelliChlor IC20 cell for Canada
520912	IntelliChlor IC40 cell for Canada

See page 390 for replacement parts.

EASYTOUCH® CONTROL SYSTEMS ACCESSORIES

POOL/SPA CONTROL SYSTEMS

Product	Description	Product	Description
ACCESSORIES FOR EASYTOUCH SYSTEMS			
521485	IntelliValve® Valve Actuator	521885	iS4 Spa-side Remote, White 100 ft.
522104	ScreenLogic Bundle (includes 520500 and 523434)	AI101	Surge Suppressor for 115V transformer wiring
520500	Protocol Adapter Only	AI201	Surge Suppressor for 230V transformer wiring
523434	Wireless Connection Kit Complete, Antenna and Transceiver	520272	Air & Water Temperature Sensor (white)
520639	ScreenLogic High Power Wireless Link for large properties	522101	Solar Temperature Sensor (black)
520660	EasyTouch Laptop trainer	520198	Two-Speed 3HP Relay
520199	1000 ft. COM cable, four conductor, 22 AWG	263045	Valve Actuator
520106	3HP Relay for IntelliTouch or EasyTouch	520818	COM Port Expansion Module with 1 ft. cable
520548	EasyTouch ICP (Indoor Control Panel) for 4 circuit systems	RCS1	Additional Spa Jets Switch (for multiple jet pumps)
520549	EasyTouch ICP (Indoor Control Panel) for 8 circuit systems	ESO3	Emergency Shut-Off Switch w/Audible Alarm
520546	EasyTouch Wireless Controller Kit for 4 circuit system, including transceiver	520967	Light Direct Connect Kit (eliminates need for j-box)
520547	EasyTouch Wireless Controller Kit for 8 circuit system, including transceiver	521178	SpaCommand Remote, White with 150 ft. cable
520588	IntelliChlor® Pass-through Cell for Winter or start-up	521176	SpaCommand Remote, Black with 150 ft. cable
520594	IntelliChlor Diagnostic Wand	521179	SpaCommand Remote, White with 250 ft. cable
520595	IntelliChlor replacement unions (contains 2 o-rings, 2 couplers, 2 nuts)	521177	SpaCommand Remote, Black with 250 ft. cable
520670	IntelliChlor acid washing kit (contains closed end union cap, o-ring, & coupling nut)	521180	SpaCommand Remote Mudbox Accessory
520734	IntelliChlor 15 foot extension power cord	521500	SpaCommand Replacement Plastics (black & white trim ring, mounting bracket, screws and O-ring)
520736	IntelliChlor Flow Switch replacement kit		

CALIFORNIA PROPOSITION 65 WARNING
 ⚠️ **WARNING:** Cancer and Reproductive Harm.
 ⚠️ **AVERTISSEMENT:** Peut Causer le Cancer et des Dommages au Système Reproducteur.
 ⚠️ **ADVERTENCIA:** Cáncer y Daño Reproductivo.
www.p65warnings.ca.gov PB 202124



520818 - COM Port Expansion Module



521885 - iS4 Remote Control



520548 - EasyTouch ICP for 4 circuit systems
 520549 - EasyTouch ICP for 8 circuit systems
 520546 - EasyTouch wireless for 4 circuit systems
 520547 - EasyTouch wireless for 8 circuit systems



520554 - IntelliChlor IC20 Cell
 520555 - IntelliChlor IC40 Cell
 521105 - IntelliChlor IC60 Cell



SpaCommand® Remote
TRADEGRADE

See page 390 for replacement parts.

EASYTOUCH® PL4/PSL4 CONTROL SYSTEMS

ENTRY LEVEL POOL/SPA CONTROL SYSTEMS

TRADEGRADE



EasyTouch PL4/PSL4 System

The EasyTouch PL4/PSL4 Control Systems offers a new level of control for homeowner's looking for an affordable, easy to use pool/spa control system. EasyTouch PL4/PSL4 allows control pools with a smaller number of features including pumps, filters, lighting, water features, spa control, heaters and heat pumps, and chemical control. The EasyTouch PL4 control system is a 4-circuit system, designed for a single body of water. The EasyTouch PLS4 is designed to control a pool/spa combination. Both options are available bundled with our ScreenLogic Interface Kit that allows for remote operation on a computer, smartphone, mobile digital device or right at the Power Center on the equipment pad. For more advanced features and up to 8 feature circuits, please see previous page for the EasyTouch Control System options.

CALIFORNIA PROPOSITION 65 WARNING

⚠ **WARNING:** Cancer and Reproductive Harm.
 ⚠ **AVERTISSEMENT:** Peut Causer le Cancer et des Dommages au Système Reproducteur.
 ⚠ **ADVERTENCIA:** Cáncer y Daño Reproductivo.
www.p65warnings.ca.gov

Featured Highlights

EasyTouch PL4/PSL4 Features include:

- Supports 1 IntelliFlo® Pump
- Supports 2 Feature circuits
- Supports 4 IntelliFlo Pump speeds
- Supports 4 scheduled programs
- Supports ScreenLogic2® Interface
- IntelliChem® Chemical Controller support
- IntelliChlor® support (must use optional 520556 power center)
- Supports IntelliBrite® Lights, MagicStream® Laminars and ColorVision® Bubblers

Note: EasyTouch PL4/PSL4 Systems use the power center enclosure that does not contain a breaker base.



522464 - EasyTouch PS4/PSL4 wireless for 4 circuit systems



521885 - iS4 Remote Control

Ordering Information

Product	Model
EASYTOUCH PL4/PSL4 SYSTEMS	
522352	EasyTouch PL4 - Single Body (base system - no ICP, no actuators)
522353	EasyTouch PL4 - Single Body with ScreenLogic Wireless Bundle (base system - no ICP, no actuators)
522354	EasyTouch PSL4 - Pool/Spa (base system - no ICP, 2 actuators)
522355	EasyTouch PSL4 - Pool/Spa with ScreenLogic Wireless Bundle (base system - no ICP, 2 actuators)
ACCESSORIES	
522464	EasyTouch PL4/PSL4 Wireless Remote
522465	EasyTouch PL4/PSL4 Indoor Control Panel
522104	ScreenLogic Wireless Bundle
520639	ScreenLogic High Power Wireless Link for large properties

EASYTOUCH® PS4/PSL4 CONTROL SYSTEMS

ACCESSORIES

Product	Description	Product	Description
ACCESSORIES FOR EASYTOUCH PS4/PSL4 SYSTEMS			
521485	IntelliValve® Valve Actuator	520736	IntelliChlor Flow Switch Replacement Kit
522464	EasyTouch PL4/PSL4 Wireless Remote	521885	iS4 Spa-side Remote, White 100 ft.
522465	EasyTouch PL4/PSL4 Indoor Control Panel	AI101	Surge Suppressor for 115V transformer wiring
522104	ScreenLogic Bundle (includes 520500 and 523434)	AI201	Surge Suppressor for 230V transformer wiring
520500	Protocol Adapter Only	520272	Air & Water Temperature Sensor (white)
523434	Wireless Connection Kit Complete, antenna and transceiver	522101	Solar Temperature Sensor (black)
520199	1000 ft. COM cable, four conductor, 22 AWG	520198	Two-Speed 3HP Relay
520106	3HP Relay for IntelliTouch or EasyTouch	263045	Valve Actuator
520588	IntelliChlor Pass-through Cell for Winter or start-up	520818	COM Port Expansion Module with 1 ft. cable
520594	IntelliChlor Diagnostic Wand	RCS1	Additional Spa Jets Switch (for multiple jet pumps)
520595	IntelliChlor replacement unions (contains 2 o-rings, 2 couplers, 2 nuts)	ESO3	Emergency Shut-Off Switch w/Audible Alarm
520670	IntelliChlor acid washing kit (contains closed end union cap, o-ring, & coupling nut)	520967	Light Direct Connect Kit (eliminates need for j-box)
520734	IntelliChlor 15 foot extension power cord		

CALIFORNIA PROPOSITION 65 WARNING
 ⚠️ **WARNING:** Cancer and Reproductive Harm.
 ⚠️ **AVERTISSEMENT:** Peut Causer le Cancer et des Dommages au Système Reproducteur.
 ⚠️ **ADVERTENCIA:** Cáncer y Daño Reproductivo.
www.p65warnings.ca.gov PA20273.4



520556 - IC20, IC40, IC60 Power Center



520818 - COM Port Expansion Module



521885 - iS4 Remote Control



522465 - EasyTouch PS4/PSL4 ICP for 4 circuit systems



522464 - EasyTouch PS4/PSL4 wireless for 4 circuit systems



520554 - IntelliChlor IC20 Cell
 520555 - IntelliChlor IC40 Cell
 521105 - IntelliChlor IC60 Cell



523009 - iChlor® 30 Cell Only
 523010 - iChlor 15 Cell Only

See page 390 for replacement parts.

INTELLICONNECT®

CONTROL AND MONITORING SYSTEM

TRADEGRADE



IntelliConnect Control and Monitoring System

Featured Highlights

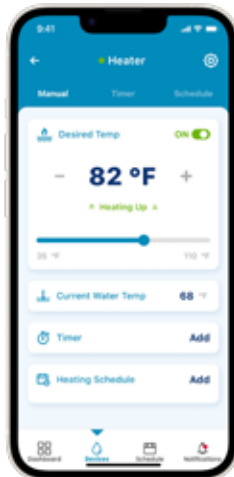
- Updated with an external antenna for optimal device connection. Less likely to need a WiFi extender
- Enables smart connections to any of these Pentair devices: IntelliFlo® or IntelliPro® Pumps, IntelliChlor® or iChlor® Salt Chlorine Generator
- Allows for two relay connections to equipment like pool or landscape lights, pool cleaner booster pumps, or single-speed pumps including competitive models
- Provides real-time information on the status of the filtration system and other pool equipment
- Easily sets up and schedules automatic operation of connected equipment

IntelliConnect allows pool owners to monitor and control various devices, including pumps, lights, salt chlorine generators and more, all through an app on a smart device, for easy, convenient control. IntelliConnect provides real-time information on the status of the filtration system and other pool equipment. Pool owners can command the system to work a little harder when extra filtration is needed.

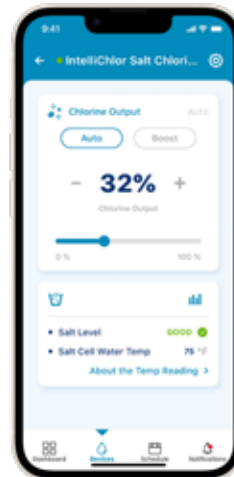
Product	Description
INTELLICONNECT CONTROL AND MONITORING SYSTEM	
523317	IntelliConnect Control and Monitoring System



Pump Status



Desired Temperature



Chlorine Output

CALIFORNIA PROPOSITION 65 WARNING
 ⚠️ **WARNING:** Cancer and Reproductive Harm.
 ⚠️ **AVERTISSEMENT:** Peut Causer le Cancer et des Dommages au Système Reproducteur.
 ⚠️ **ADVERTENCIA:** Cáncer y Daño Reproductivo.
www.p65warnings.ca.gov PA 201714



COMPOOL® CONTROL SYSTEMS TO EASYTOUCH® AUTOMATION UPGRADE

TRADEGRADE

Featured Highlights

- Works with ScreenLogic2® Interface
- Allows easy upgrade to EasyTouch® Automation functionality for the following Compool® Systems: CP3400, CP3600, CP3800, CP3810, CP1000*, CP2000*, CP3000, CP30*, CP100*, LX100EZT*, LX100EZTL*, 520348*, 520349*, TimeMaster* with LX-10 power center
- Filter pump + 7 Auxiliaries
- AUX Extra Support
- Works with EasyTouch Automation Indoor Control Panel (520549) and EasyTouch Wireless Remote (520547)
- Supports 2 VS or 2 VF IntelliFlo® Pumps, iS4 and SpaCommand® Spa Side Remotes, IntelliChlor® Salt Chlorine Generator, IntelliBrite® LED Lights, UltraTemp® Heat Pumps, and MagicStream® Laminar Jets
- 8 Feature Circuits
- Supports IntelliChem® Chemical Controller pH/ORP Control System**

* Requires Compool System to EasyTouch Automation Upgrade System with New System Transformer Kit (P/N 521247).

** Requires v2.100 firmware or higher. Visit www.pentairpool.com for the latest firmware updates.



Compool to EasyTouch Upgrade

CALIFORNIA PROPOSITION 65 WARNING

⚠ **WARNING:** Cancer and Reproductive Harm.
 ⚠ **AVERTISSEMENT:** Peut Causer le Cancer et des Dommages au Système Reproducteur.
 ⚠ **ADVERTENCIA:** Cáncer y Daño Reproductivo.
www.p65warnings.ca.gov P/N 20174A

Ordering Information

Product	Description	Product	Description
COMPOOL TO EASYTOUCH UPGRADE			
521107	Compool to EasyTouch Upgrade without transformer Kit		
521247	Compool to EasyTouch Upgrade with new system transformer Kit		
COMPOOL TO EASYTOUCH UPGRADE ACCESSORIES			
522104	ScreenLogic Bundle (includes 520500 protocol adapter and 523434 wireless connection kit)	522101	Solar Temp Sensor (black)
520500	Protocol Adapter Only	520554	IntelliChlor IC20 Cell*
523434	Wireless Connection Kit Complete, antenna and transceiver	520555	IntelliChlor IC40 Cell*
520549	EasyTouch Indoor Control Panel (8 circuits)	521105	IntelliChlor IC60 Cell*
520547	EasyTouch Wireless Remote (8 circuits)	520556	IntelliChlor Power Center
521885	iS4 Spa-side Remote, White 100 ft.	523009	iChlor 30 Cell Only-Retail
521178	SpaCommand Remote, White, 150 ft. cable	523010	iChlor 15 Cell Only-Retail
521179	SpaCommand Remote, White, 250 ft. cable	523080	iChlor 15 PWR PCK 110 Bundle
521176	SpaCommand Remote, Black, 150 ft. cable	523081	iChlor 30 PWR CTR Bundle
521177	SpaCommand Remote, Black, 250 ft. cable	523108	iChlor 30 Cell Only - Canada
521180	Mudbox Accessory	523109	iChlor 15 PWR PCK Bundle - Canada
263045	Valve Actuator	RLYLXD	Relay Kit for 2 Speed Pumps
521485	IntelliValve® Valve Actuator	RLYLX3HP	Additional 25 Amp, 3 HP Power Relay
520272	Air & Water Temp Sensor (black)	521099Z	Compool to EasyTouch Replacement Circuit Board
		520818	COM port expansion Module

*** Requires the 520556 IntelliChlor® Salt Chlorine Generator Power Center when used with the Compool to EasyTouch System.

See pages 391–393 for replacement parts.

SUNTOUCH® CONTROL SYSTEM

TRADEGRADE



SunTouch System

SunTouch Control System is the easy way to keep your pool and spa clean, comfortable, and ready to enjoy. With the touch of a few buttons, you can quickly program your pool and spa filtration and heating cycles to fit your schedule. And it's just as simple to change programs or switch to manual mode for those unplanned, spontaneous plunges. With SunTouch Control System, your pump and heater automatically run whenever you want, for as long as you want so your pool and spa are always warm and inviting.

In addition to controlling your pump and heater, the standard SunTouch Control System package has the ability to schedule operation of additional functions, such as your lights or automatic cleaner. You can also add a third valve actuator to automate a solar heating system or water feature.

Featured Highlights

- One touch function – no complicated routine to memorize
- Ability to program pool and spa and two additional features. All circuits in the system can control four operating schedules (maximum six total schedules per system)
- Supports 4 feature circuits for programming convenience
- Compatible with gas or electric heaters, heat pumps, and solar systems
- Temperature control can be set in one degree increments
- Supports one IntelliFlo® Pump and IntelliChlor® Salt Chlorine Generator

CALIFORNIA PROPOSITION 65 WARNING
 ⚠️ **WARNING:** Cancer and Reproductive Harm.
 ⚠️ **AVERTISSEMENT:** Peut Causer le Cancer et des Dommages au Système Reproducteur.
 ⚠️ **ADVERTENCIA:** Cáncer y Daño Reproductivo.
www.p65warnings.ca.gov P650074

Ordering Information

Product	Description
SUNTOUCH CONTROL SYSTEMS	
520820	SunTouch Control System (pool/spa) – Includes 2 actuators, 2 temp sensors (20 ft. water, 40 in. air) and 3 relays
520819	SunTouch Solar Control System – Includes 1 actuator, 1 solar valve, and 2 temp sensors (20 ft. water, 40 in. solar)
520859	SunTouch Single Body Control System – Includes temp sensors (20 ft. water, 40 in. air) and 3 relays
520856	SunTouch Solar with 3-way valve – Includes 1 actuator, 3-way valve, and 2 temp sensors (20 ft. water, 40 in. solar)
520857	SunTouch Booster Pump Version – Includes 1 relay, and 2 temp sensors (20 ft. water, 40 in. solar)
ACCESSORIES FOR SUNTOUCH SOLAR CONTROL SYSTEMS	
520106	3HP Relay
520272	Air & Water Temperature Sensor (white)
522101	Solar Temperature Sensor (black)
520198	2 Speed Pump Relay
ES03	Emergency Shut-Off Switch w/Audible Alarm
521485	IntelliValve® Valve Actuator
263045	Valve Actuator
520967	Light Direct Connect Kit (eliminates need for J-box)

SOLARTOUCH®

SOLAR CONTROL SYSTEM

TRADEGRADE



Featured Highlights

- Digital calibration of water and solar temperature in one degree increments
- Integrates with **IntelliFlo® and IntelliPro® Variable Speed pumps**
- Set pool temperatures and solar temperature differentials with the touch of a button
- Solar valve automatically drains the solar collectors when pump shuts off
- Durable PTFE seal is maintenance-free for years of dependable service
- LCD display provides sharp, clear readings
- LED indicator lights confirm SolarTouch automation is working. Service indicator LED shows when attention is required.
- Motorized valve actuator is built to last with sturdy steel gears; highly efficient low-voltage motor; service switch for flow direction
- Weatherproof composite enclosure
- Nocturnal cooling and recirculation freeze protection with filter-pump timer override
- 3-year warranty



SolarTouch System

The SolarTouch Solar Control System offers full digital control for the most precise, efficient, swimming pool heating possible. The digital thermostat is set with the touch of a button and will monitor the temperature of the pool water and solar collectors. SolarTouch Control System integrates with IntelliFlo and IntelliPro Variable Speed pumps for unparalleled efficiency.

Ordering Information

PRODUCT	DESCRIPTION
SOLARTOUCH SOLAR CONTROL SYSTEM	
521592	SolarTouch Solar Control System with 3-way solar drain down valve, valve actuator, and 2 temp sensor (20 ft. water, 40 in. solar)
521632	SolarTouch Solar Control System with 3-way Valve, valve actuator and 2 temp sensors (20 ft. water, 40 in. solar)
521590	SolarTouch Solar Control only
521942	SolarTouch Booster Pump
521606	SolarTouch Flash Programmer (USB)

CALIFORNIA PROPOSITION 65 WARNING
 ⚠️ **WARNING:** Cancer and Reproductive Harm.
 ⚠️ **AVERTISSEMENT:** Peut Causer le Cancer et des Dommages au Système Reproducteur.
 ⚠️ **ADVERTENCIA:** Cáncer y Daño Reproductivo.
www.p65warnings.ca.gov

See page 391 for replacement parts.

REMOTE CONTROL AND MONITORING SOFTWARE FOR THE SERVICE PRO

Working through the Internet, you can remotely monitor system and equipment conditions and diagnose problems. Log-in using the advanced ScreenLogic2® Interface to make system changes as needed. This option is ideal for any service professional, particularly those with large customer territories. Handle questions or concerns without a site visit and save time and fuel while providing top-notch customer service.

Customer Name	Address	System	Remarks	Pool Temp	Pool Pump	Pool Set Point	Pool Actual Temp	Pool Head Status	Spa Temp	Spa Set Point	Spa Actual Temp	Spa Head Status	Spa Spa Heater	Spa Spa Blower	Light On / Off	Water Filter	Alarm	Salt Level Open	Pool Chlorine Output	Spa Chlorine Output	PH	ORP	Alkal Level	Chlorine Test Level	Water Filter	Status
Jan MacCallum	512 021	System 9-1 IntelliChlor CAC	1-101	88 F	ON	88 F	88 F	OK	90 F	90 F	90 F	OK	Heater	ON	Yes	None	100	1.0	1.0	7.4	120	120	120	120	120	Connected OK
David MacCallum	512 021	System 9-1 IntelliChlor CAC	1-101	88 F	ON	88 F	88 F	OK	90 F	90 F	90 F	OK	Heater	ON	Yes	None	100	1.0	1.0	7.4	120	120	120	120	120	Connected OK
Jan Wright	POOL 4.0 Build 1489	EasyTouch2	2-280	103 F	ON	103 F	103 F	OK	103 F	103 F	103 F	OK	Heater	ON	Yes	None	100	1.0	1.0	7.4	120	120	120	120	120	Connected OK
Lisa Smith	POOL 4.0 Build 1489	System 9-1 IntelliChlor CAC	1-110	118 F	ON	118 F	118 F	OK	118 F	118 F	118 F	OK	Heater	ON	Yes	None	100	1.0	1.0	7.4	120	120	120	120	120	Connected OK
Harold Perry	POOL 5.2 Build 182	EasyTouch2 & IntelliChlor CAC	2-200	103 F	ON	103 F	103 F	OK	103 F	103 F	103 F	OK	Heater	ON	Yes	None	100	1.0	1.0	7.4	120	120	120	120	120	Connected OK
Denise Lundberg	POOL 5.2 Build 182	EasyTouch2 & IntelliChlor CAC	2-200	103 F	ON	103 F	103 F	OK	103 F	103 F	103 F	OK	Heater	ON	Yes	None	100	1.0	1.0	7.4	120	120	120	120	120	Connected OK
Homey Smith	POOL 5.2 Build 182	System 9-1 IntelliChlor CAC	1-101	88 F	ON	88 F	88 F	OK	90 F	90 F	90 F	OK	Heater	ON	Yes	None	100	1.0	1.0	7.4	120	120	120	120	120	Connected OK
Ed Stone	POOL 5.2 Build 182	System 9-1 IntelliChlor CAC	1-101	88 F	ON	88 F	88 F	OK	90 F	90 F	90 F	OK	Heater	ON	Yes	None	100	1.0	1.0	7.4	120	120	120	120	120	Connected OK

Computer screen photo shows complete system status for every customer with an IntelliTouch®, EasyTouch® or EasyTouch PL4 and PSL4 Control System. Conditions requiring attention are quickly identified and often corrected from the comfort of your office. Just point and click to turn equipment on and off, or change programs and schedules.

- **Works with EasyTouch® PL4/PSL4, EasyTouch® and IntelliTouch® Automation** – EasyTouch and IntelliTouch Automation support remote monitoring & control, while SunTouch System only supports remote monitoring.
- **Works with IntelliChem® Chemical Control System and IntelliChlor® Salt Chlorine Generator.**
- **Supports ScreenLogic2 Interface - for a complimentary copy, visit our website:**
www.pentair.com/poolsoftwaredownloads

NOTE: THE PENTAIR SCREENLOGIC INTERFACE FOR MACINTOSH® DESKTOP COMPUTERS IS NOT COMPATIBLE WITH 64BIT SPEED MACINTOSH CATALINA OPERATING SYSTEM. CUSTOMERS WHO UPDATE THEIR MAC® DESKTOP COMPUTERS TO THE NEW CATALINA MACOS WILL NO LONGER BE ABLE TO USE SCREENLOGIC DESKTOP INTERFACE. THIS CHANGE DOES NOT AFFECT IPHONE®, IPAD®, ALEXA® OR ANY OTHER SCREENLOGIC INTERFACES. ONLY MAC COMPUTER DESKTOPS WITH SCREENLOGIC WHO UPDATE TO THE NEW CATALINA OS.

INTELLIVALVE®

VALVE ACTUATOR

TRADEGRADE

Featured Highlights

- Thirteen (13) LEDs give precise, easy-to-read indication of valve position
- Built-in interface allows quick and simple set-up of water flow
- Sleek, minimalist design is compact and fits easily within any equipment pad
- Sealed, maintenance-free design is weatherproofed for maximum reliability and extended service life
- Suitable for 1.5", 2", 2.5" and 3" valve sizes.
- 24-volt operation for use with standard automation systems, 750 mA max amp draw
- Adjustable 3.75-degree increments within the maximum 180-degree swing



**IntelliValve
Valve Actuator**

The IntelliValve Valve Actuator lets you set just the right flow for water features. Its intuitive controls and LED position indicator lights make operation fast and push-button easy. Thirteen (13) bright LEDs provide a clear visual indication of the valve position from fully open to fully closed and everywhere in between. Simply use the left/right and Save buttons to set the perfect flow rate in just seconds.

CALIFORNIA PROPOSITION 65 WARNING
 ⚠️ **WARNING:** Cancer and Reproductive Harm.
 ⚠️ **AVERTISSEMENT:** Peut Causer le Cancer et des Dommages au Système Reproducteur.
 ⚠️ **ADVERTENCIA:** Cáncer y Daño Reproductivo.
www.p65warnings.ca.gov P65-2007-14

Ordering Information

Product	Description
INTELLIVALVE	
521485	For any Pentair Automation System Compatible with control systems that use standard actuators

VALVE ACTUATOR

VALVE CONTROL SYSTEMS

TRADEGRADE



Valve Actuator

Designed for use with 2-port and 3-port valves. Features maximum torque, 24VAC bi-directional motor.

Featured Highlights

CVA24 Valve Actuator

- Helps Prevent dead-heading of pumps
- Corrosion-proof enclosure
- Service switch (for flow direction)
- ETL recognized
- UL listed for use with IntelliTouch® Automation
- Operates Compool, Ortega® or Jandy® Valves
- Compatible with all 24VAC Control Systems

CALIFORNIA PROPOSITION 65 WARNING
 ⚠️ **WARNING:** Cancer and Reproductive Harm.
 ⚠️ **AVERTISSEMENT:** Peut Causer le Cancer et des Dommages au Système Reproducteur.
 ⚠️ **ADVERTENCIA:** Cáncer y Daño Reproductivo.
www.p65warnings.ca.gov PH201714

Ordering Information

Product	Model	Voltage	Cable	Rotation	Compatibility	Motor
VALVE ACTUATOR						
263043	CVA24L	24 VAC	3-wire	90 deg.	2-port Compool/Ortega/Jandy Valves	Bi-directional
263044	CVA24Y	24 VAC	3-wire	120 deg.	3-port Compool PTV2Y Valve	Bi-directional
263045	CVA24T	24 VAC	3-wire	180 deg.	3-port Compool/Ortega/Jandy Valves	Bi-directional

Jandy® is a registered trademark of Jandy Industries, Inc.

GFCI CIRCUIT BREAKERS



GFCI Circuit Breakers

Featured Highlights

- Personnel Protection GFCI
- Meets 2008 to current NEC Standards for Pool Pumps
- Compatible with IntelliTouch® and EasyTouch® Control System
- Designed to protect personnel exposed to ground faults in AC, DC, and mixed AC/DC systems where levels exceed 6 milliamps

Ordering Information

Product	Description	Carton Qty.	Carton Wt (Lbs.)
GFCI CIRCUIT BREAKERS			
PA215GF	2-pole 15 amp GFCI	10	11.50
PA220GF	2-pole 20 amp GFCI	10	11.50

CALIFORNIA PROPOSITION 65 WARNING
 ⚠️ **WARNING:** Cancer and Reproductive Harm.
 ⚠️ **AVERTISSEMENT:** Peut Causer le Cancer et des Dommages au Système Reproducteur.
 ⚠️ **ADVERTENCIA:** Cáncer y Daño Reproductivo.
www.p65warnings.ca.gov PH201714

LX80 & LX820 SYSTEMS

COMMERCIAL POOL/SPA CONTROL SYSTEMS

TRADEGRADE

Featured Highlights

LX802 Commercial Pool/Spa Control System

- Emergency Shut-off Switch (disables all pumps)
- Audio Alarm
- Power Center available at the equipment site, features: mechanical time clocks for the Pool and Spa Filter Pumps, power relays (3) for Pool and Spa Filter Pumps and Spa Jet Pump and equipment service switches

LX8202 Emergency Shut-off System

- Emergency Shut-off Switch
- Audio Alarm
- Power Center at the equipment site with equipment status lights and power relays (2) for Spa Filter Pump and Jet Booster Pump

NOTE: System interfaces with existing Spring Wound Timer



LX802

Designed for a commercial pool and spa application. Provides Remote Spa Jets switch (suitable for outdoor locations) with electronic countdown timer (15/30 minutes).

CALIFORNIA PROPOSITION 65 WARNING

⚠ **WARNING:** Cancer and Reproductive Harm.
 ⚠ **AVERTISSEMENT:** Peut Causer le Cancer et des Dommages au Système Reproducteur.
 ⚠ **ADVERTENCIA:** Cáncer y Daño Reproductivo.
www.p65warnings.ca.gov

Ordering Information

Product	Circuits	Power Relays Std/Max	Circuit Breaker Capacity	Voltage	Relay Amp Inductive
LX80 & LX820 COMMERCIAL POOL/SPA CONTROL SYSTEMS					
LX802*	Pool Filter, Spa Filter, Jet1, Jet2	3 / 8	N/A	115V/230V	20
LX8202	*Spa Filter, Jet1, Jet2	2 / 3	N/A	115V/230V	20

* LX80 and LX820 systems standard relays included are 20 amp 2HP. Part number RLYLX3HP can be ordered if installing a 3HP pump.



LX8202

Designed for retrofitting commercial spas where an emergency shut-off switch is required.

Product	Description
ACCESSORIES FOR LX80 COMMERCIAL POOL/SPA CONTROL SYSTEM	
RCS1	Additional Spa Jets Switch (for multiple jet pumps)
ES03	Emergency Shut-Off Switch w/Audible Alarm
RLYLX	Additional Power Relay (for auxiliary equipment)
RLYLX3HP	Additional 25 Amp, 3 HP Power Relay (for auxiliary equipment)
RYALX	Harness to operate 2 Power Relays from one control circuit
ACCESSORIES FOR LX8202 COMMERCIAL POOL/SPA CONTROL SYSTEM	
RLYSC	Additional Power Relay (for second jet pump or filter pump)
RLYSC3HP	Additional 25 Amp, 3 HP Power Relay (for auxiliary equipment)

INTELLICHEM® CHEMICAL CONTROLLER



IntelliChem Chemical Controller



Chemical Tanks with on board pumps

IntelliChem Chemical Controller can work independently or in conjunction with other Pentair automation products. It's built-in Langelier Saturation Index calculator lets pool owners know when the water is in or out of balance. IntelliChem Chemical Controller uses the same technology found in commercial installations, water parks, hotel and community pools.

Featured Highlights

- Auto Setup/Configuration wizard makes start-up quick and easy
- Programmable chemical feed cycle and mix times for precise water balance
- Aids in safer water conditions by preventing excess chemical addition
- Built-in Langelier Saturation Index calculator lets you know when your water chemistry is perfectly in or out of balance
- Minimizes chemical costs by adding chemicals with precision
- Flow sensor ensures chemicals won't feed without system flow
- Password-protected access prevents tampering or accidental program change
- Seamless interface with IntelliTouch®, EasyTouch®, SunTouch® Automation Systems and ScreenLogic2® Interface for chemical management
- Compatible with IntelliChlor® Salt Chlorine Generators, external dosing pumps, and CO₂ systems

CALIFORNIA PROPOSITION 65 WARNING

⚠️ **WARNING:** Cancer and Reproductive Harm.
 ⚠️ **AVERTISSEMENT:** Peut Causer le Cancer et des Dommages au Système Reproducteur.
 ⚠️ **ADVERTENCIA:** Cáncer y Daño Reproductivo.

www.p65warnings.ca.gov PN 521357

Ordering Information

Product	Description	Application
INTELLICHEM CHEMICAL CONTROLLER		
521357	Controller Only	For systems using external feed pumps, IntelliChlor, or CO ₂ . Containers ordered separately. The 521357 Controller is NSF Listed.
522621	Controller and Acid Tank with Tank Mounted Pump ^{1,2}	For systems requiring a tank and pump for feeding liquid acid
522622	Controller and Acid and Chlorine Tanks with Tank Mounted Pumps ^{1,2}	For systems requiring tanks and pumps for feeding liquid acid and chlorine
INTELLICHEM CHEMICAL CONTROLLER ACCESSORIES		
522472	Acid Tank with Tank Mounted Pump ^{1,2}	Convenient and innovative container for storing and feeding liquid acid. No external pump required.
522473	Chlorine Tank with Tank Mounted Pump ^{1,2}	Convenient and innovative container for storing and feeding liquid chlorine. No external pump required
521378	Acid Container ¹ without pump	Convenient and innovative container for storing muriatic acid (must provide separate external pump or can be upgraded with the new pump on tank PN 522474)
521397	Chlorine Container without pump	Convenient and innovative container for storing chlorine (must provide separate external pump or can be upgraded with the new pump on tank PN 522474)
522480	Stenner Blue Pump on Tank Tube ² Replacement (2/pk)	Replacement tubes for blue tank mounted pump
522474	Upgrade Kit for IntelliChem Container	Upgrade older non-pump containers (521378 & 521397) with the new tank mounted pump
522478Z	Upgrade Kit for IntelliChem Controller	Upgrade controller only systems to use the new tank mounted pumps
714000070	CO ₂ Kit w/Diffuser, Solenoid, Regulator	For systems using CO ₂ to lower pH levels.
521622	IntelliChem Winterizing Kit	Includes protective end caps and solution for storing pH and ORP probes in freezing climates
521498	IntelliChem Flash Programming Kit	Upgrade IntelliChem Chemical Controllers to the latest firmware for added functionality and improved performance

¹ Pentair always recommends 1:1 dilution when using full strength muriatic acid.

When mixing, remember to always add acid to water.

² Pentair recommends replacing peristaltic pump tubes every 6 months.

Note: Always try to position container off the equipment pad (if possible).



See page 394–395 for replacement parts.

COMMERCIAL INTELLICHEM®

COMMERCIAL CHEMICAL CONTROLLER

Featured Highlights

- Dual sanitizer[†] support
- Programmable chemical feed cycle and mix times for precise water balance
- Aids in safer water conditions by preventing excess chemical addition in a 24 hour period
- Built-in Langelier Saturation Index calculator lets you know when your water chemistry is perfectly in or out of balance
- Flow sensor ensures chemicals won't feed without system flow
- Password-protected access prevents tampering or accidental program change
- Use of ScreenLogic2[®] on iOS[®] device offers the ability to keep track of pH, ORP, Temperature and Calculated PPM (cPPM) levels and make adjustments locally or remotely
- Compatible with IntelliChlor[®] Salt Chlorine Generators, external dosing pumps, and CO₂ systems
- Title-22 Compliant
- IntelliChem Commercial iOS device is available on Apple[®] App Store[®]
- 30-day data log storage of pH, ORP, cPPM and temperature
- Battery backup for RealTime Clock (RTC)



Commercial IntelliChem
Chemical Controller

CALIFORNIA PROPOSITION 65 WARNING

⚠️ **WARNING:** Cancer and Reproductive Harm.
 ⚠️ **AVERTISSEMENT:** Peut Causer le Cancer et des Dommages au Système Reproducteur.
 ⚠️ **ADVERTENCIA:** Cáncer y Daño Reproductivo.
www.p65warnings.ca.gov

Ordering Information

Product	Description	Application
COMMERCIAL INTELLICHEM CHEMICAL CONTROLLER		
523478	IntelliChem Commercial System No pump	The 523478 Controller is ETL Listed to NSF 50 Standard. Does NOT include ScreenLogic, but available as an option.
522577	IntelliChem Commercial System 1 pump ^{1,2}	Dual support w/standalone ScreenLogic remote PC and iOS device connectivity. Pre-mounted and pre-wired on 2x2 plastic backboard. Containers ordered separately. The 522577 Controller is ETL Listed to NSF 50 Standard.
522578	IntelliChem Commercial System 2 pumps ^{1,2}	Dual support w/standalone ScreenLogic remote PC and iOS device connectivity. Pre-mounted and pre-wired on 2'x2' plastic backboard. Containers ordered separately. The 522578 Controller is ETL Listed to NSF 50 Standard
INTELLICHEM CHEMICAL CONTROLLER ACCESSORIES		
523492Z	Stenner 50GPD External Pump ^{1,2}	50GPD Stenner pump for feeding liquid acid or chlorine
523493	Stenner 50GPD Pump Tube 2 pk. ^{1,2}	50GPD Stenner pump tubes for every 6-month replacement
523494	Stenner 50GPD Pump Tube 5 pk. ^{1,2}	50GPD Stenner pump tube for every 6-month replacement

¹ Pentair always recommends 1:1 dilution when using full strength muriatic acid. When mixing, remember to always add acid to water.

² Pentair recommends replacing peristaltic pump tubes every 6 months. Note: Always try to position container off the equipment pad (if possible).

iOS[®] is a registered trademark of Cisco Technology, Inc. in the United States and/or other countries.

Apple[®] and App Store[®] are registered trademarks of Apple Inc., in the United States and/or other countries.



See page 397 for replacement parts.

[†]“Sanitizer” is an industry term of art and is not intended to imply any antimicrobial capabilities.

INTELLIPH® PH CONTROLLER

CHEMICAL CONTROLLER

TRADEGRADE

eco select®



IntellipH Controller
Requires IntelliChlor Generator
Version 3 (2010 +)

Featured Highlights

- Helps protect your pool equipment from corrosion when pH swings in and out of balance
- Acid dispensing rate adjusts with the touch of a button
- Bolts securely to the equipment pad to help prevent poolside acid spills
- Powered by either IntelliChlor® Salt Chlorine Generator Power Center or EasyTouch® or IntelliTouch® Automation system with IntelliChlor Generator support for easy wiring and installation
- UL and cUL listed
- One-year limited warranty on electronics and metering pump
- New pump design allows for tool-less pump tube replacement

IntellipH Controllers is a convenient way to regulate a swimming pools pH level. It automatically dispenses muriatic acid into the pool to help eliminate fluctuations in the pH level. IntellipH is the perfect companion for the IntelliChlor Salt Chlorine Generator and together they help balance pool water to keep it sparkling clear.

Ordering Information

Product	Description
INTELLIPH	
521377	IntellipH controller with acid container ¹
522480	Stenner replacement head pump tubes 2-pk (replace annually)

¹ Pentair always recommends 1:1 dilution when using full strength muriatic acid. When mixing, remember to always add acid to water.

Note: Always try to position container off the equipment pad (if possible).

*Pentair recommends replacing peristaltic pump tubes every 6 months.



CALIFORNIA PROPOSITION 65 WARNING
 ⚠️ **WARNING:** Cancer and Reproductive Harm.
 ⚠️ **AVERTISSEMENT:** Peut Causer le Cancer et des Dommages au Système Reproducteur.
 ⚠️ **ADVERTENCIA:** Cáncer y Daño Reproductivo.
www.p65warnings.ca.gov FR 2017-1A